

BAINBRIDGE ISLAND SEA LEVEL RISE FOLLOW-UP SURVEY



Purpose



In winter of 2023, we surveyed nearly 400 Bainbridge Island residents about sea level rise and their ideas for solutions. We resurveyed willing participants and asked them to choose the solutions they preferred as suggested by their peers, as well as provide additional concerns and thoughts on how Bainbridge should respond to sea level rise.



We asked participants to select their top 5 choices from a list of 10 different types of solutions proposed by their peers.

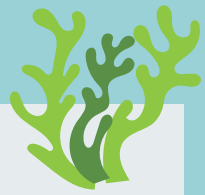


10 TYPES OF SOLUTIONS:

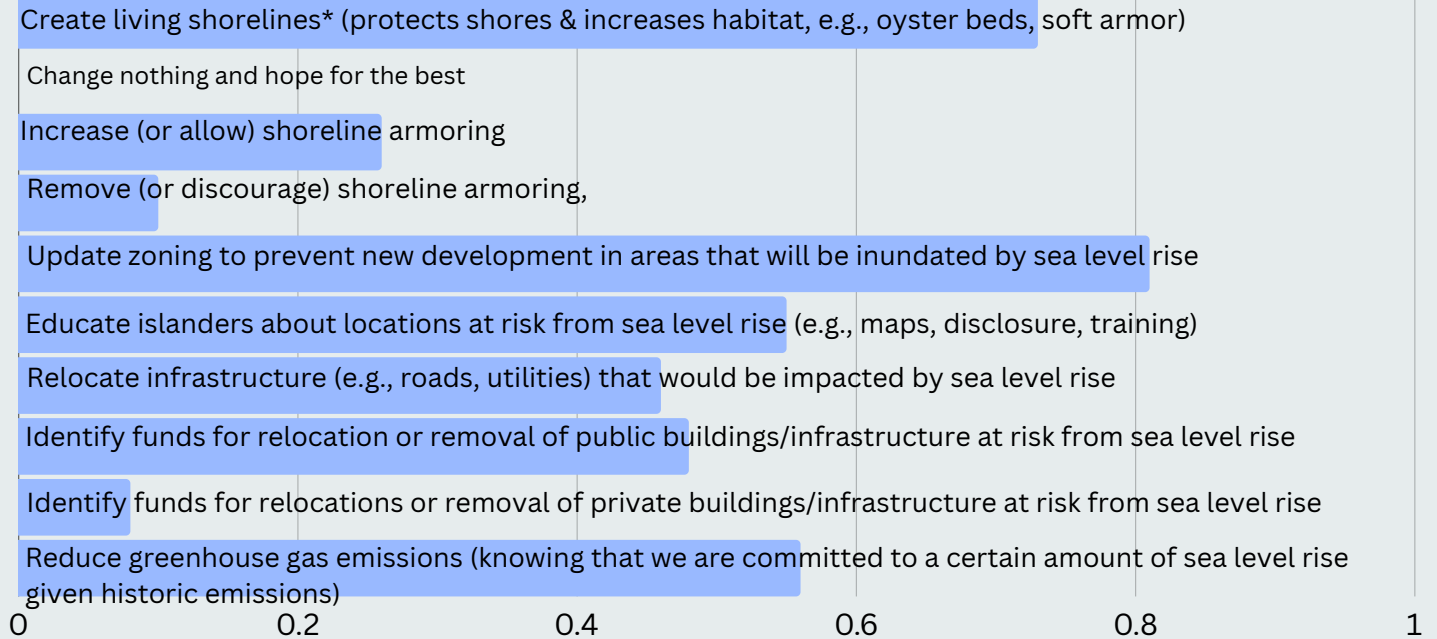
1. Create living shorelines* (protects shores & increases habitat, e.g., oyster beds, soft armor)
2. Change nothing and hope for the best
3. Increase (or allow) shoreline armoring
4. Remove (or discourage) shoreline armoring
5. Update zoning to prevent new development in areas that will be inundated by sea level rise
6. Relocate infrastructure (e.g., roads, utilities) that would be impacted by sea level rise
7. Educate islanders about locations at risk from sea level rise (e.g., maps, disclosure, training)
8. Identify funds for relocation or removal of public buildings/infrastructure at risk
9. Identify funds for relocations or removal of private buildings/infrastructure at risk
10. Reduce greenhouse gas emissions (knowing that we are committed to a certain amount of sea level rise given historic emissions)

Funding support from

Key Findings



TOP FIVE CHOICES SELECTED BY 124 RESPONDENTS



We also analyzed survey results to look for differences in demography, including where participants resided on Island and on age. Participants responded similarly regardless of where they lived on island (waterfront or non-waterfront). Popular choices included creating living shorelines, updating zoning, and reducing greenhouse gas emissions. Changing nothing (0% of respondents) and identifying funds for relocations or removal of private buildings were ranked low by both groups. Respondents under the age of 25 were more interested in removing armoring compared to those over the age of 25, and they were less interested in infrastructure relocation.

ADDITIONAL SUGGESTIONS AND CONCERNS FROM THE SURVEY

- Desire for expert opinions to help inform decisions
- Want to better understand shoreline armoring benefits and impacts
- Be sensitive to context: removing, adding, and softening armoring may all be needed
- Saltwater intrusion impacting aquifers
- Other nature-based solutions
- Impacts on ferry transportation
- Risk of contamination from septic, sewer, and contaminated sites

