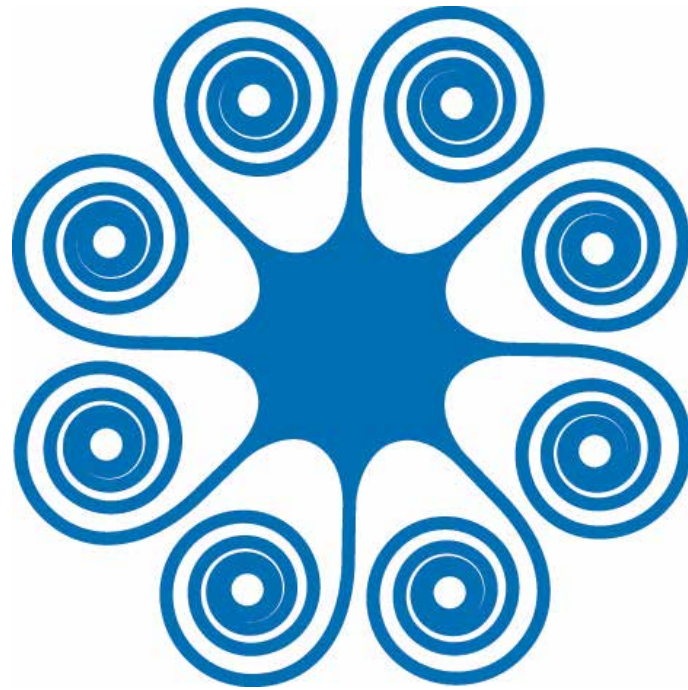


2014 Annual Report




EcoAdapt™
Meeting the challenges of climate change

2014 Partners

American Society of Adaptation Professionals
California Landscape Conservation Cooperative (LCC)
Central Puget Sound Regional Open Space Strategy
Charles Stewart Mott Foundation
Conservation Biology Institute
Data Basin
Geos Institute
Gordon and Betty Moore Foundation
Great Northern LCC
Greater Farallones National Marine Sanctuary
Headwaters Economics
Integrated Data Management Network
The Kresge Foundation
John D. and Catherine T. MacArthur Foundation
Marine Planning Partnership for the North Pacific Coast
Nanwakolas Council
National Climate Change and Wildlife Science Center
National Oceanic and Atmospheric Administration
NCAnet
Nez Perce-Clearwater National Forests
North Pacific LCC

Northwest Climate Science Center
SeaPlan
Sound Science
Template for Assessing Climate Change Impacts
and Management Options (TACCIMO)
Tongass National Forest
U.S. Fish and Wildlife Service
USDA Forest Service
U.S. Forest Service Eastern Forest Environmental
Threat Assessment Center
U.S. Forest Service Northern Region
U.S. Forest Service Pacific Southwest Region
U.S. Forest Service Western Wildland
Environmental Threat Assessment Center
U.S. Geological Survey
University of Washington
Wilburforce Foundation
Wildlife Conservation Society
WWF-Indonesia
WWF-Canada

*“You’re always a couple of steps ahead of the rest,
keep it up.”*

- John O’Leary, Massachusetts Division of Fisheries & Wildlife

2014 Individual Donors

Lily Diament-Hansen

Joshua Foster

Helen Fox & Rex Robinson

Robert Kamansky

Paul Moss

Susan Nehring

Rick Petersen

Your name here in 2015!

Lara's Letter



That's Lara jumping for joy about having the best darn adaptation team in the field.

Photo Credit: Lee Hannah

Every year I think the EcoAdapt team has done the most awesome things we could possibly do, only to find out that the subsequent year is even better. Well, 2014 didn't disappoint. We could have rested on our laurels from 2013, but we didn't. In the following pages, you are going to find but a sampling of what went on in 2014.

While many people look for the new things we did in 2014, and there are plenty of those, we hope you'll also pay attention to those activities EcoAdapt undertakes each and every day to help make the work of adaptation better for society as a whole, and to strengthen the field. Many of these efforts have become household names (CAKE...tell me you don't ever talk about cake at your house?).

Enjoy this stroll through 2014. Relive the magic of that year. But most of all, take a moment to consider if something we're sharing in this overview could benefit your own work. By all means, take advantage of what we have done and help it help you make the world more robust in the face of climate change!

Sincerely,

Lara

Chief Scientist & Executive Director

Donate to EcoAdapt

We want to stay a couple of steps ahead of the challenges that climate change is sending our way. In fact we'd rather be doing that than looking for funding to support our work. If you'd also rather have us working on innovative new responses to climate change, effective tools to improve decision making, and engaging ways to get this information out to the people who need it so that societal responses to climate change happens in a smart and sustainable manner, make a donation to EcoAdapt.

Every donor, big or small, makes a difference, and it's easy! Visit EcoAdapt.org and click on the cute red **Donate** button, or support the postal service while saving EcoAdapt fees by simply sending a check to: EcoAdapt, P.O. Box 11195, Bainbridge Island, WA 98110

Where does my gift go?

Your gift supports the entire EcoAdapt mission – helping to meet the challenge of climate change.

In 2014, donations supported staff time to:

- ⚙️ Maintain and improve core operations for EcoAdapt. All of the things that make an organization run smoothly and efficiently are almost exclusively derived from general support!
- ⚙️ Participate at regional and national conferences, gatherings and planning processes
- ⚙️ Advise unfunded partners in conservation, communities, and tribal governments
- ⚙️ Act as board member and boosters of the American Society of Adaptation Professionals
- ⚙️ Serve on the federal Advisory Committee on Climate Change and Natural Resource Science, and much more!

EcoAdapt Team

Lara J. Hansen, Chief Scientist and Executive Director
Eric Mielbrecht, Directing Scientist & Director of Operations
Lori Meagher, Controller
Rachel M. Gregg, Lead Scientist and State of Adaptation Coordinator
Alessandra (Alex) Score, Lead Scientist and Awareness to Action Coordinator
Jessi Kershner, Lead Scientist and Adaptation Consultation Coordinator
Jessica Hitt, Scientist and Climate Adaptation Knowledge Exchange (CAKE) Coordinator
WendyKay Gewiss, Development and National Adaptation Forum Coordinator
Whitney Reynier, Associate Scientist
John Pokallus, Scientist



Photo credit: Eric Mielbrecht

Board of Directors

Lara J. Hansen, Executive Director, EcoAdapt (President)
Brad Thompson, President, National Color (Treasurer)
Will Travis, Senior Advisor, Bay Area Joint Policy Committee (Secretary)
Paul Marshall, Director, Reef Ecologic
John Nordgren, Senior Program Officer, Kresge Foundation
Katherine Silverthorne, Project Director, Aristotle Project
Erika Zavaleta, Professor, University of California, Santa Cruz

In Person

Practitioners reached since EcoAdapt started : **17,464** ~~3,358~~ Practitioners reached in 2014

38: # of partner organizations

National Adaptation Forum Regional Partners: **5**

of Awareness to Action workshops : **15** Practitioners trained in the 15 workshops: **398** from **162** organizations

120: Total number of people interviewed for State of Adaptation assessments in 2014

243: hours of adaptation training staff received in 2014 (not counting working on climate change every day!)

State visited by EcoAdapt in 2014:



EcoAdapt Index 2014

Online

801: # of EcoAdapt social media posts

Number of Adaptation Nation reads in 2014: **7,936**

EcoAdapt.org page views: **55,928**

Page views for State of Adaptation projects: **906**

National Adaptation Forum webinars: **4**

289: # of people reached through NAF Webinar Series

24 Average number of emails staff send per day

On CAKE

CAKE page views: **149,492**

Some places CAKE visitors came from:

Washington, DC: 1,939 India: 1,663

South Africa: 315 Nepal: 128 Iceland: 16

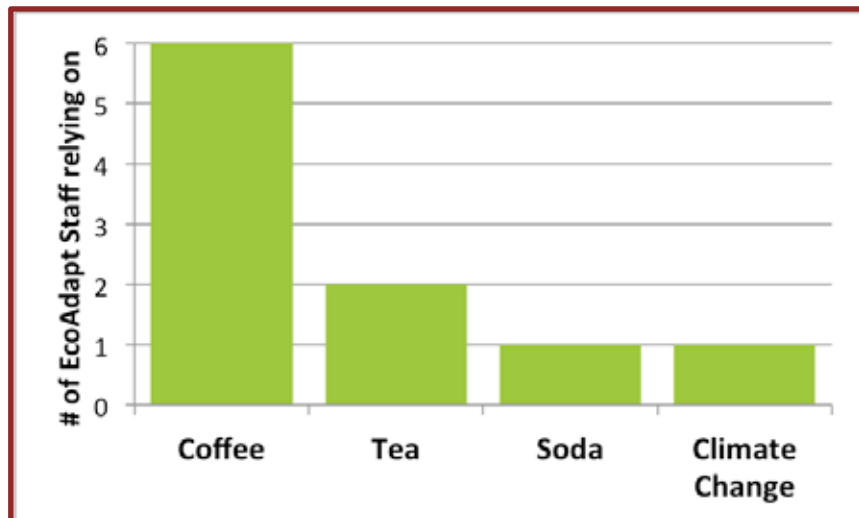
Top State of Adaptation Case Studies (on CAKE):

- *Relocating the Village of Newtok, Alaska due to Coastal Erosion*
- *Creating Climate Ready Communities: Adapting to the Impacts of Climate Change on the Oregon Coast*
- *Planning for Sea Level Rise in Olympia, Washington*

International Cities most visiting CAKE:

London	Toronto	Sydney
	New Delhi	Melbourne

On Caffeine



Climate Adaptation Knowledge Exchange



"If you are looking for tried and true approaches towards resilience or if you are looking for the most cutting edge and innovative new actions at all different scales, you just have to spend some time with CAKE."

-Adam Whelchel, The Nature Conservancy

2014 was an exciting year for the CAKE program! CAKE continued to grow as a household name thanks in part to our visits to regional adaptation conferences and meetings across the country. Even after all that travel we didn't stop there! We worked to develop out new cutting edge functionality and develop key partnerships to meet the CAKE community's growing needs and appetite for new content.

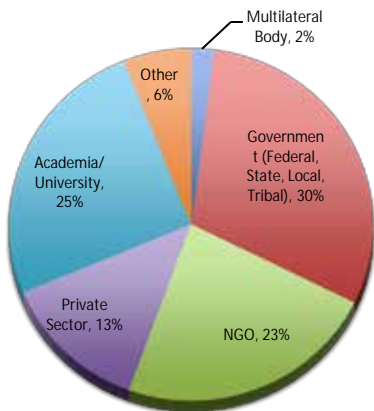
This year we partnered with the National Adaptation Forum to promote both CAKE and the Forum at adaptation events around the country. We participated in tools cafés, poster sessions, oral presentations, panels, and community events to increase awareness about CAKE and the Forum. We taught people how to use CAKE to find information, as well as contribute and showcase their work on the site. 2014 was a whirlwind of travel throughout the United States.



If you didn't run into the EcoAdapt CAKE team in 2014, you may have missed all the major climate adaptation events of the year!

"CAKE provides a down-to-earth, easily accessible way to get information on all that's going on in the climate adaptation field. I have found out about a lot of interesting projects and research going on because of CAKE, and gotten some good ideas for our community."

-Adrienne Burke, City of Fernandina Beach, FL



The Kaleidoscope of CAKE users

To gather feedback and ideas on how to continually improve CAKE to meet user needs we rely on our annual user survey. The CAKE community includes users from government agencies, nonprofit organizations, academia, the private sector, and the public. For the last three years, over 75% of our users have reported using information they found on CAKE to inform their work and make adaptation decisions! This year over 79% of respondents reported they have used CAKE in their work. Community members have used CAKE to:

- "...look for relevant case studies and implementation methods that we [can] use, replicate, or tweak - instead of having to reinvent the wheel."
- "...[Stay] informed on issues and activities that I share with my network."
- "...schedule professional development opportunities with the information CAKE provides..."

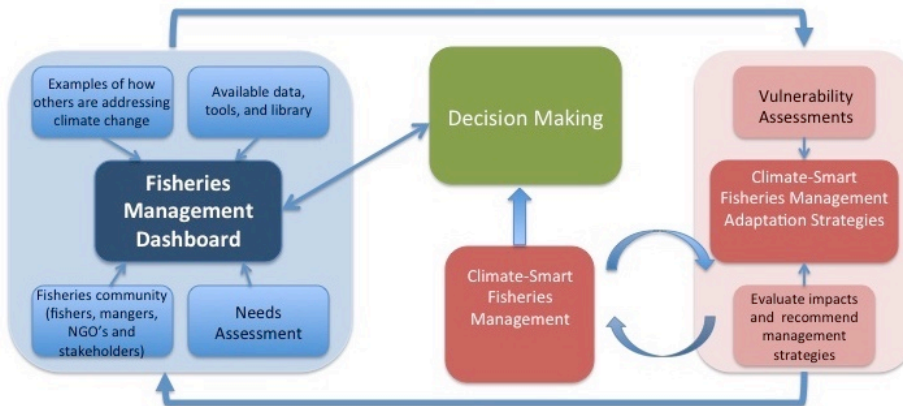
The Climate Adaptation Knowledge Exchange™ (CAKE; www.cakex.org) is an online resource that supports open access information exchange between practitioners. CAKE includes case studies, a library, a community forum, a directory of individuals and organizations interested and/or engaged in adaptation, and a tools section of resources for adaptation action. To learn more, contact Jessica Hitt (Jessica@EcoAdapt.org).

What do fish, water utilities, and wildlife biologists have in common? They were all subjects of State of Adaptation surveys in 2014! One of the biggest challenges in responding to climate change is understanding not only what changes are occurring but also what actions are most feasible to reduce the extent of these effects. EcoAdapt strives to support practitioners by providing relevant adaptation examples and a forum for knowledge sharing. Through interviews and surveys, we are able to identify and assess trends as different sectors and geographies move forward with efforts to prepare for and respond to climate change. These real-life, practical examples of on-the-ground adaptation efforts are used in assessments, trainings, and presentations, and shared through CAKE. In addition, our case studies and synthesis reports are often featured by other partners; for example, *The State of Marine and Coastal Adaptation in North America* (2011) and its associated case studies were cited in the 2014 National Climate Assessment, and *The State of Climate Change Adaptation in the Great Lakes Region* (2012) was distributed as a primary reference document to participants at a 2014 regional adaptation conference hosted by the University of Wisconsin-Milwaukee's Center for Water Policy.

State of Adaptation

Project Highlight:

Climate Adaptation Toolkit for Fisheries Management



Climate-informed Fisheries Management Dashboard schematic

Climate change is having major impacts on commercial, recreational, subsistence, and aquaculture fisheries. We secured funding from the National Oceanic and Atmospheric Administration to improve the understanding of climate impacts on marine fisheries and the repercussions on management in the United States. The project includes regional impacts assessments of fisheries, a needs

assessment survey on what over 130 managers require to make climate-informed decisions, examples of climate savvy fisheries management strategies, and an online dashboard powered by CAKE. Our vision is that the Toolkit will help fisheries managers easily locate the most current and relevant information on climate change, as well as develop targeted climate-informed decisions. It will also link other tools, papers, models, and data so that all climate- and fisheries-related information can be easily accessed by

"The case study examples have given me ideas to progress my own work in the climate change adaptation space."

- Neil Cliffe, Queensland Department of Agriculture & Fisheries

"One of my roles is to show local officials what's possible -- and feasible -- for their communities. The case studies are useful for that type of education."

- Pam DiBona, Massachusetts Bays National Estuary Program

The State of Adaptation™ program is a research initiative designed to facilitate adaptation action by surveying practitioners, assessing activities, and creating products, such as case studies, to catalyze creative thinking. Results of this program are shared through many venues, including the Climate Adaptation Knowledge Exchange (CAKE) and our blog, Adaptation Nation. To learn more, contact Rachel Gregg (Rachel@EcoAdapt.org).

Vulnerability Assessments & Adaptation Planning with the USDA Forest Service

Did you know that the USDA Forest Service manages over 192 million acres of public land as national forests and grasslands? These millions of acres provide important services to people living in rural and urban areas, including clean drinking water, recreation opportunities such as hiking, camping, and fishing, flood and erosion control, and clean air, among others. Climate changes and impacts on Forest Service land and water, such as increased wildfires, long-term droughts, and reduced snowpack, will not only affect habitats and species, but also threaten human communities and the services – such as clean drinking water – upon which we all rely.

In response to both current and potential future impacts, the Forest Service is taking action to confront climate change. The agency committed to creating climate savvy revision of all of their land management plans – including assessing the current state of the science, evaluating the vulnerability of their resources, and generating adaptation strategies to reduce vulnerabilities. To help the Forest Service meet these challenges, EcoAdapt teamed up with a number of forests in the western United States to assess resource vulnerabilities and facilitate the development of adaptation strategies with generous support from the Forest Service, the California Landscape Conservation Cooperative, and the Wilburforce Foundation.



Photo credit: USDA Forest Service

Our work with national forests started in the Sierra Nevada, and has since expanded to forests in Idaho, Montana, and Alaska. Our Awareness to Action approach is highly collaborative, involving multiple agencies, organizations, and stakeholders. Our methodology is intended to improve understanding of climate changes, impacts, and natural resource vulnerabilities; generate actionable responses to reduce vulnerabilities and/or take advantage of opportunities; facilitate integration of climate information into resource management and planning; and provide training, tools, resources, and guidance to resource managers to extend our process into their own work. Our approach includes:

- Establishing science-management partnerships with multiple agencies and stakeholders ensuring our process and products meet decision-making needs;
- Collaboratively identifying key forest resources (e.g., habitats, species, ecosystem services) that are the focus of management and planning efforts;
- **Synthesizing current and projected future climate change impacts** using a combination of literature reviews and spatial analyses;
- Leading a **vulnerability assessment of key resources** that includes a combination of workshops and expert input, literature review, and peer review;
- Facilitating the **development of adaptation strategies and actions** through a workshop process;
- Generating a variety of **products and supporting materials** on relevant climate information for diverse audiences; and
- Reflecting on and evaluating each project in order to improve our methods and products, ensuring our partners get the most out of every engagement with us.

Recent Projects

Nez Perce-Clearwater National Forests

The 4+ million-acre landscape of the Nez Perce-Clearwater National Forests is incredibly heterogeneous, ranging from 9,000-ft mountain peaks to deep river canyons, and coniferous forests to grasslands and prairie. Warming air temperatures, declining snowpack, and increasing wildfires have already been observed and are projected to continue, with significant impacts on aquatic and riparian, dry forest, and subalpine habitats, as well as amphibian and fish, dry forest bird, and high-elevation species (e.g., wolverine, lynx). Resource managers developed a suite of adaptation options to help ameliorate climate impacts to these and other resources, including cultural and heritage sites, recreation, timber, and forage. One unique aspect of their adaptation options was the consideration of potential conflicts with other resources, which, along with feasibility and effectiveness, can be used to help prioritize actions for implementation. The information from this project is helping inform Forest Plan revisions.



Photo Credit: Jessi Kershner



Photo credit: Carey Carmichael Case

"The EcoAdapt-led stakeholder workshop and vulnerability assessment of aquatic resources (snow, ice, water, riparian vegetation, and fish) provided a foot hold to follow up with strategic partners and actions to integrate knowledge and

adaptation measures into project planning and program management. In particular, the report provided a clear link to NPLCC priority resources; they have provided seed money for the Tongass National Forest to work on an action plan and convene a workshop in partnership with the Southeast Alaska Fish Habitat Partnership and the State of Alaska."

-Julianne Thompson, Tongass National Forest

Tongass National Forest

The Tongass National Forest of Southeast Alaska is a segment of the continuous coastal temperate rainforest extending from northern California to Cook Inlet, Alaska. The ecosystem patterns and processes of the forest are intimately linked to the land's ability to shed and process water, with glacial carving and erosion shaping much of the landscape. Resource managers and regional stakeholders evaluated changes in temperature and precipitation (rain and snow) as likely to have significant impacts on snow, ice, and water features, particularly at lower elevations and in southern portions of the region. Riparian vegetation and fish species are also likely to be vulnerable to climate change, but to a lesser degree as they have a much higher ability to adapt to potential changes. Resource managers are now planning a workshop to identify adaptation options that help reduce risks and increase resilience of aquatic resources.

Stay tuned for more vulnerability assessments and adaptation planning efforts with national forests in California! Read about our experience expanding these methods to marine and coastal ecosystems with the Greater Farallones National Marine Sanctuary on page 10. For more information on this work, contact Jessi Kershner (Jessi@EcoAdapt.org).



Photo credit: NOAA

Awareness to Action

The old adage “none of us is as smart as all of us” is being put into practice in EcoAdapt’s collaboration with the Greater Farallones National Marine Sanctuary, California Landscape Conservation Cooperative, and regional stakeholders along the north-central California coast. The goal of this partnership is to assess the vulnerability of focal marine and coastal habitats, species, and ecosystem services in the study region, and to develop adaptation strategies to facilitate climate-informed management. Although this project will focus on resources and management opportunities within the Sanctuary, both the vulnerability assessment and developed adaptation strategies will benefit additional resource management agencies in the region, including state and national parks, conservation groups, counties, and cities.

To jump-start this project, EcoAdapt led two collaborative workshops in 2014. A *Focal Resources Workshop* brought together diverse stakeholders, including resource managers, planners, conservation groups, and scientists, to identify the habitats, species, and ecosystem services most critical for a vulnerability assessment. Being an ambitious group, participants identified eight habitats, 31 species, and five ecosystem services to carry through to assess. Next, over 40 stakeholders again gathered in San Francisco for a *Vulnerability Assessment Workshop*, where they considered how those focal resources would be effected by climatic and non-climate stressors. Over two days, participants learned about climate change affecting the north-central California coast, applied that information to assess resource vulnerability, and began preliminary discussions about management solutions. Aside from generating critical information for adaptation planning, this workshop was an exciting application of EcoAdapt’s vulnerability assessment methodology to the marine and coastal realm!

EcoAdapt and project partners are now hard at work compiling a final vulnerability assessment report. Information from this report will be used to design adaptation strategies and develop implementation plans during 2015 and beyond. Look for this report to be published in the Office of National Marine Sanctuaries Conservation Series in 2015!

Partners	California Academy of Sciences
Greater Farallones National Marine Sanctuary	Golden Gate National Recreation Area
California Landscape Conservation Cooperative	National Park Service
EcoAdapt	Point Blue Conservation Science
Farallones Marine Sanctuary Association	Point Reyes National Seashore
Bay Area Ecosystems Climate Change Consortium	US Fish and Wildlife Service

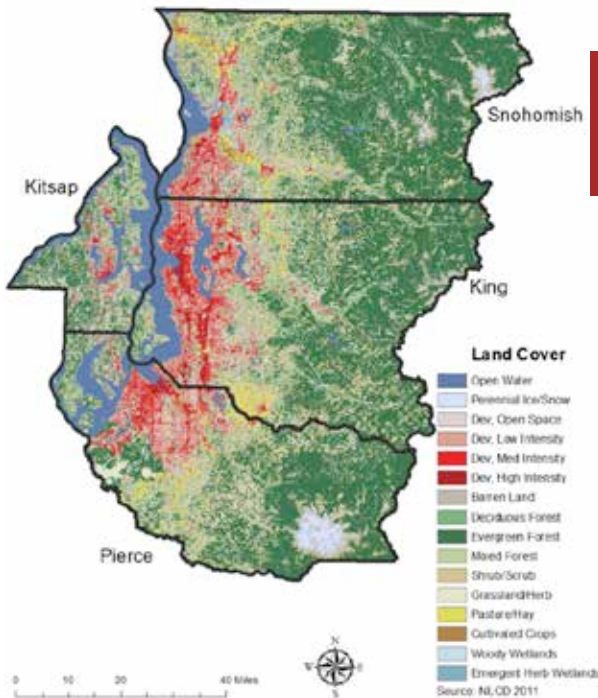
“EcoAdapt has been a critical component of [our] efforts to characterize climate impacts in our region and to plan for those impacts. They have very effectively guided our organization through what can be an arduous and complex process to assess the vulnerability of many of our biological resources, and have more than adequately set the stage for successful adaptation planning. We are grateful to have had EcoAdapt’s expertise and guidance, and would recommend them as an invaluable resource for any organization seeking to undertake a similar process.”

- Sara Hutto, Greater Farallones National Marine Sanctuary

Building capacity and bringing our partners from Awareness to Action are central to EcoAdapt’s mission. Our adaptation experts have pioneered a series of innovative and interactive workshops to bring those engaged in the early stages of climate adaptation from awareness to implementation.

"EcoAdapt has been an exceptional partner, facilitating the engagement of experts throughout the Pacific Northwest to develop a white paper, metrics, and policy-based action strategies that elevate the intersection of open space conservation and enhancement and climate change... EcoAdapt is able to digest the complexity of climate change science in order to make it accessible to many types of practitioners and is deeply cognizant of how all planning and policy decisions must be interconnected across traditional silos to be effective."

- Ginger Daniel, Central Puget Sound Regional Open Space Strategy



Adaptation Consultation

Open space, ranging from public parks to large wilderness areas, can achieve multiple environmental, economic, and social benefits, including climate mitigation and adaptation. In 2014, EcoAdapt was asked to chair the Climate Change Task Force of the Regional Open Space Strategy (ROSS), an interdisciplinary collaborative effort to optimize the ecological, economic, recreational, and aesthetic functions of open space in the Central Puget Sound region. The ROSS is adopting a comprehensive approach that brings together four counties, eight watersheds, and hundreds of experts to manage open space.

The Central Puget Sound region is already experiencing the effects of a rapidly changing climate, including warming temperatures, more frequent and intense precipitation events, and decreased snowpack. The creation and conservation of open space may support climate mitigation and adaptation by:

- Mitigating the urban heat island effect by providing shading and cooling;
- Enhancing water quality by filtering and removing sediment and pollutants;
- Managing surface water and coastal flood risk;
- Providing space for regionally-sourced food and fiber;
- Sequestering and storing carbon in vegetation and soils; and
- Reducing the need to travel by car by providing greenways for walking and bicycling, thereby decreasing greenhouse gas emissions.

"The best time to plant a tree is twenty years ago. The second best time is now."
 ~ Chinese Proverb

In consultation with Task Force members, we developed a white paper with recommendations for specific actions on how open space can facilitate mitigation and adaptation in King, Kitsap, Pierce, and Snohomish counties, planned for publication in 2015. EcoAdapt is also helping the ROSS integrate climate change into a GIS decision-support tool that aims to prioritize land use planning and conservation decisions. For more information on this project, please contact Rachel M. Gregg (Rachel@EcoAdapt.org).

Climate Change Task Force Members

Rachel M. Gregg, EcoAdapt (Chair)
 Lara Hansen, EcoAdapt
 Paul Fleming, Seattle Public Utilities
 Bob Freitag, University of Washington IHMPR
 Lyn Keenan, GeoEngineers

Meade Krosby, University of Washington CIG
 Keith Maw, independent
 Eileen Quigley, Climate Solutions
 Tracey Stanton, Earth Economics
 Jill Sterett, Sterett Consulting, LLC

The Adaptation Consultation program allows our experienced scientists to support the implementation of adaptation strategies by providing capacity to partners eager to take action. Each Consultation is specifically designed to meet the needs of our partners.

"[T]hank you for the chance to give a webinar last November for the National Adaptation Forum series. I think we are in a very complicated transition in which we are all facing financial limits on the capacity to travel, and some real hesitation to travel on fossil fuels, at the same time as the need for reaching new and different collaborators is sharply increased... The panelists were very pleased to have appreciative audiences, and I suspect that your webinar series helped stimulate interests which might not have been there."

- John Wiener, University of Colorado

National Adaptation Forum

While the Inaugural National Adaptation Forum happened in 2013, in order to foster practitioner engagement between national events, we collaborate with partners to host a quarterly webinar series to continue discussions on adaptation practice and share lessons learned. This webinar series is a great tool for reaching new practitioners who could not attend the last Forum. Almost 300 participants joined the 2014 webinars, including one hosted live from the California Adaptation Forum! To catch up on any webinars you may have missed, visit www.cakex.org/NAF/webinars. To learn more contact Alex Score (Alex@EcoAdapt.org).



Photo credit: California Adaptation Forum

Can you spot 6 EcoAdapters in this picture?

Thank you to our 2014 webinar partners and speakers!

Kimberly Hill Knott, Detroiters Working for Environmental Justice
Julie Maldonado, American University
Michael McCormick, California Governor's Office
Amber Pairis, California Department of Fish and Wildlife

Kara Reeve, National Wildlife Federation
Will Travis, San Francisco BCDC
Kevin Werner, NOAA W. Regional Climate Services
John Wiener, University of Colorado-Boulder
Elizabeth Yeampierre, Uprose



The Forum also supports regional adaptation conferences during the off years of the biennial event to support regional solutions. The first regional partner forum was the April 2014 Carolinas Climate Resilience Conference; other regional partners followed in the Northeast, Great Lakes, and California. By sponsoring these efforts, we aim to support the continued convening of adaptation practitioners and innovators to help build more partnerships and advance the field. Stay tuned for more information about the 2nd National Adaptation Forum in 2015 and read a preview on page 13!

The National Adaptation Forum is a biennial gathering created by a group of professionals from the private and public sectors concerned about the need to respond to and prepare for the effects of climate change. The Forum includes opportunities for professional development through formal trainings, facilitated practitioner presentations, and informal exchange of information all at a single venue.



Photo credit: Eric Mielbrecht

"EcoAdapt is a group of clever, smart and committed leaders who get a hell of a lot done."

-Will Travis, sea level rise adaptation advisor

Looking Ahead

Northwest Available Science Assessment

In partnership with the Northwest Climate Science Center and Oregon State University's Institute for Natural Resources, EcoAdapt is examining and evaluating the science behind specific climate adaptation actions to determine the conditions, time frames, and geographic areas where these actions may be most effective for resource managers. Our methodology utilizes interviews, a systematic review process to scientifically assess management-relevant questions, and extensive engagement with natural resource managers and scientists. For a test case, we are evaluating the science behind specific fire management actions in 32 national forests in the Northwest. Project outcomes will be used to inform the Northwest Climate Science Center's portfolio funding priorities.

National Adaptation Forum 2015

Building on the success of the 2013 Inaugural Forum, EcoAdapt staff took great care to plan for the 2nd National Adaptation Forum in St. Louis, Missouri May 12-14, 2015. The Forum leadership reached out to all 50 states and six countries to court seasoned adaptation professionals and community leaders in underserved communities just beginning to take on the challenges of climate change to participate, share knowledge and leave better prepared to incorporate adaptation activities into their work plans. Throughout 2014 the EcoAdapt team, Steering and Program Committees, and adaptation partners throughout the nation worked together to solicit and review over 350 proposal submissions. A new first for the Forum included negotiating meeting space the day before the conference, creating a unique opportunity for adaptation partners to hold their own annual meetings in conjunction with the National Adaptation Forum. Nine partners took advantage of this offer to gather with their groups to host annual meetings and to strategize about how to maximize their Forum experience.

CRAVe/CAKE: A joint tool to track climate change vulnerability assessments

With limited time and capacity and an ever-growing list of resources, many professionals have expressed frustration with the time required to cull through databases to find the most relevant adaptation resources. We are creating the next generation of adaptation tools by leveraging the CAKE infrastructure to custom build independent portals and search tools through a collaborative process with end users. One such project is the Climate Registry for the Assessment of Vulnerability (CRAVe), developed in partnership with the USGS National Climate Change and Wildlife Science Center, in addition to a host of other private and public partners. The CRAVe Dashboard will provide users with a searchable, centralized public registry of climate change vulnerability assessments, so that resources devoted to such assessments can be efficiently used.

Publications

Mielbrecht, E., J. Weber, C. Swenson, D. Patte, and S. Denney. 2014.
Coquille Estuary Climate Change Vulnerability Assessment.

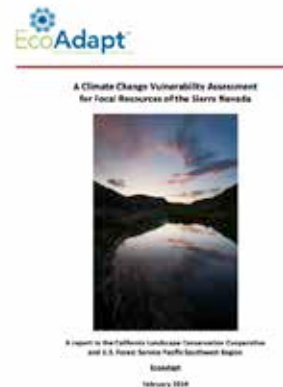
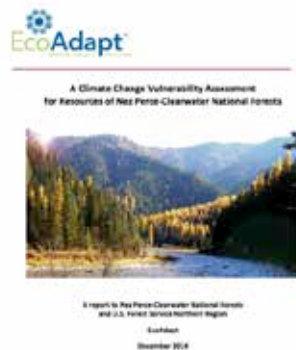
Kershner, J., editor. 2014.
Climate Change Adaptation Strategies for Focal Resources of the Sierra Nevada. Version 1.0.
EcoAdapt, Bainbridge Island, WA.

Kershner, J., editor. 2014.
A Climate Change Vulnerability Assessment for Focal Resources of the Sierra Nevada. Version 1.0. EcoAdapt,
Bainbridge Island, WA.

EcoAdapt. 2014.
A Climate Change Vulnerability Assessment for Aquatic Resources in the Tongass National Forest. EcoAdapt,
Bainbridge Island, WA

EcoAdapt. 2014.
A Climate Change Vulnerability Assessment for Resources of Nez-Perce Clearwater National Forests. Version 3.0.
EcoAdapt, Bainbridge Island, WA.

Kershner, J.M., R.M. Gregg, and K. Feifel. 2014.
Climate Change Vulnerability Maps for the North Pacific Coast of British Columbia: Implications for Coastal and Marine Spatial Planning. Report for the Marine Planning Partnership.
EcoAdapt, Bainbridge Island, WA.



Check out EcoAdapt's newest publications, as well as any older products you might have missed, on the EcoAdapt Library page (ecoadapt.org/library).

Want even more? Explore CAKEx.org for the largest collection of curated adaptation documents anywhere on the web...probably.

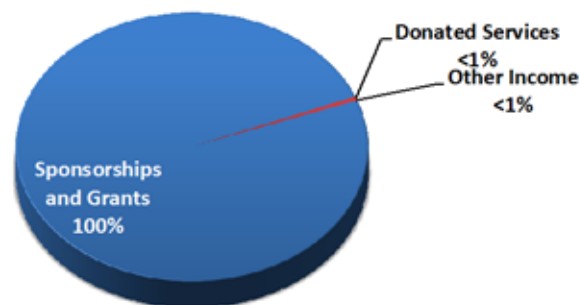
Financials

Statement of Activities & Net Assets

Year Ended December 31, 2014

SUPPORT AND REVENUE		FUNCTIONAL EXPENSES	
Sponsorships and Grants	1,986,001	Program Expenses	898,207
Donated Legal Services	8,981	Management & General	204,412
Interest and other income	1,412	Fundraising	32,550
TOTAL SUPPORT AND REVENUE	1,996,394	CHANGE IN NET ASSETS	885,112
		Net Assets beginning of year	806,947
		Net Assets end of year	1,692,059

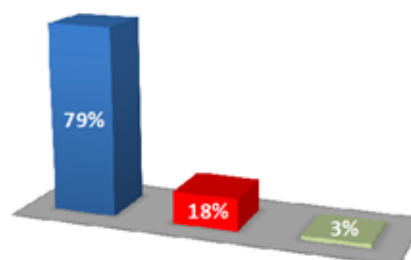
Sources of Funding



Statement of Financial Position

Year Ended December 31, 2014

ASSETS		USE OF FUNDS	
Cash & Equivalents	1,030,658	Program Expenses	931,937
Other Current Assets	679,964	Management & General	159,824
Net Investments	40,346	Fundraising	19,521
TOTAL ASSETS	1,750,967	TOTAL	1,111,282
LIABILITIES		■ Program Expenses	■ Management & General
Current Liabilities	58,908	■ Fundraising	
Total Liabilities	58,908		
NET ASSETS			
Unrestricted	148,010		
Temporarily Restricted	1,544,049		
Total Net Assets	1,692,059		
TOTAL LIABILITIES & NET ASSETS	1,750,967		





Is your Open Space climate-ready?
What's Vulnerable? Let's Assess!
Where can I get CAKE?
Is there hope for fish?

Where is the National Adaptation Forum in the off years?
Doesn't California already know everything about climate change?

Answers to these questions and more can be found in the
EcoAdapt 2014 Annual Report!



P.O. Box 11195
Bainbridge Island, WA 98110