

Northern California Climate Change Vulnerability Assessment Workshop

May 22-23, 2017 (Redding)
May 31-June 1, 2017 (Eureka)

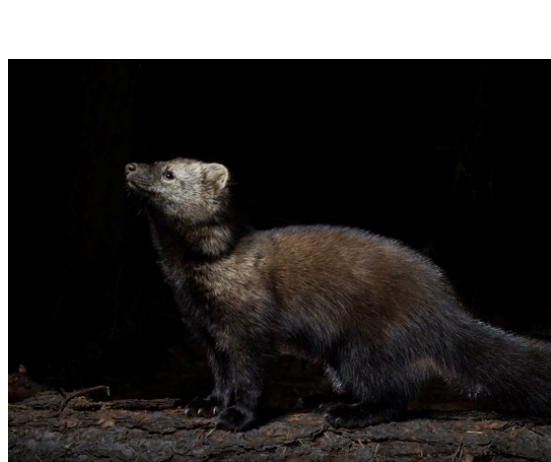
Jessi Kershner, Senior Scientist
EcoAdapt
jessi@ecoadapt.org



Northern California Climate Adaptation Project

Goals

- Improve understanding of why important Northern California resources may be vulnerable to changing climate conditions, and
- Identify what adaptation actions can be implemented to reduce vulnerabilities and/or increase overall resilience.



Project Overview

USFS

- Forest Plan Revisions
- Northwest Forest Plan Revision

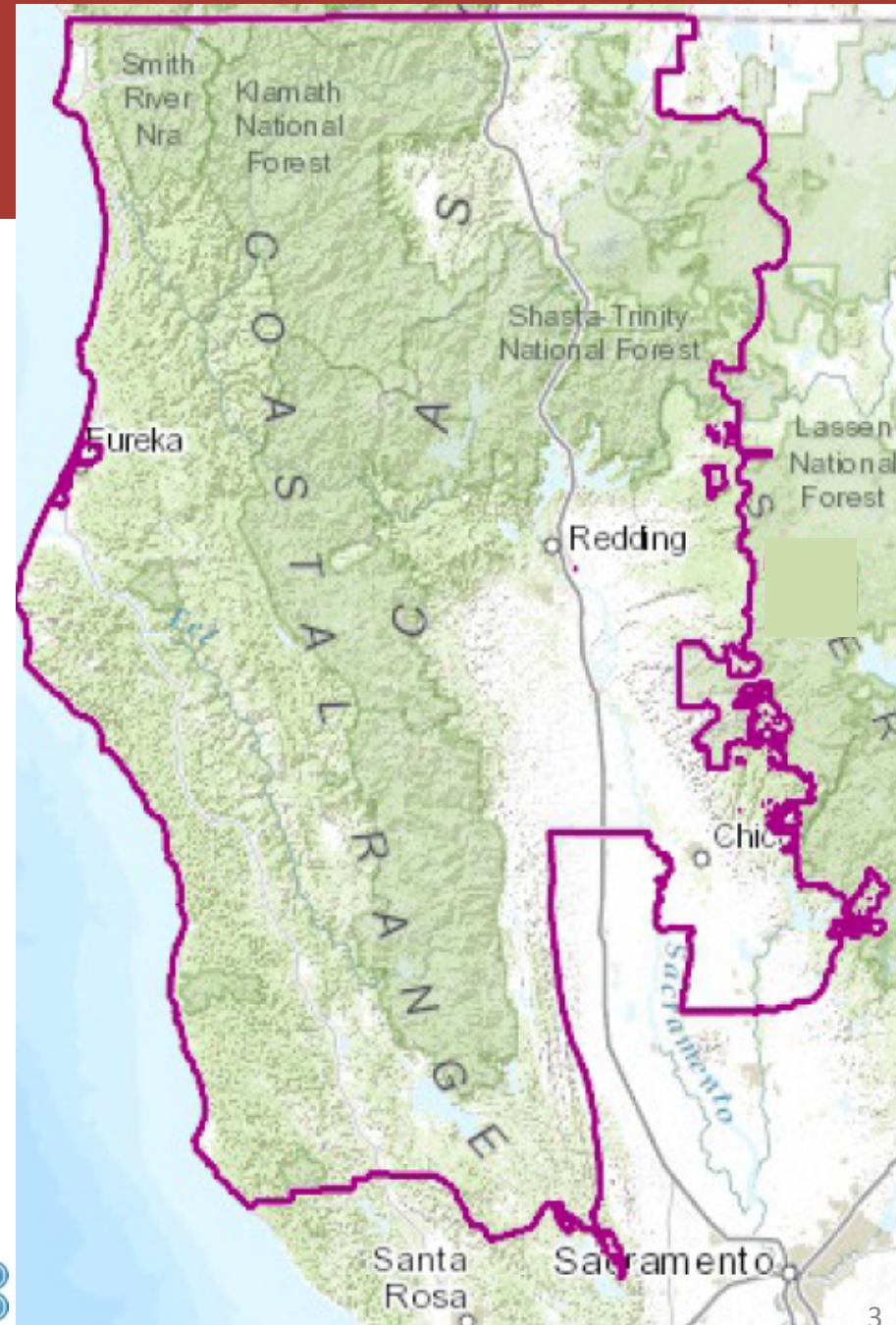
BLM

- Resource Management Plan Revisions

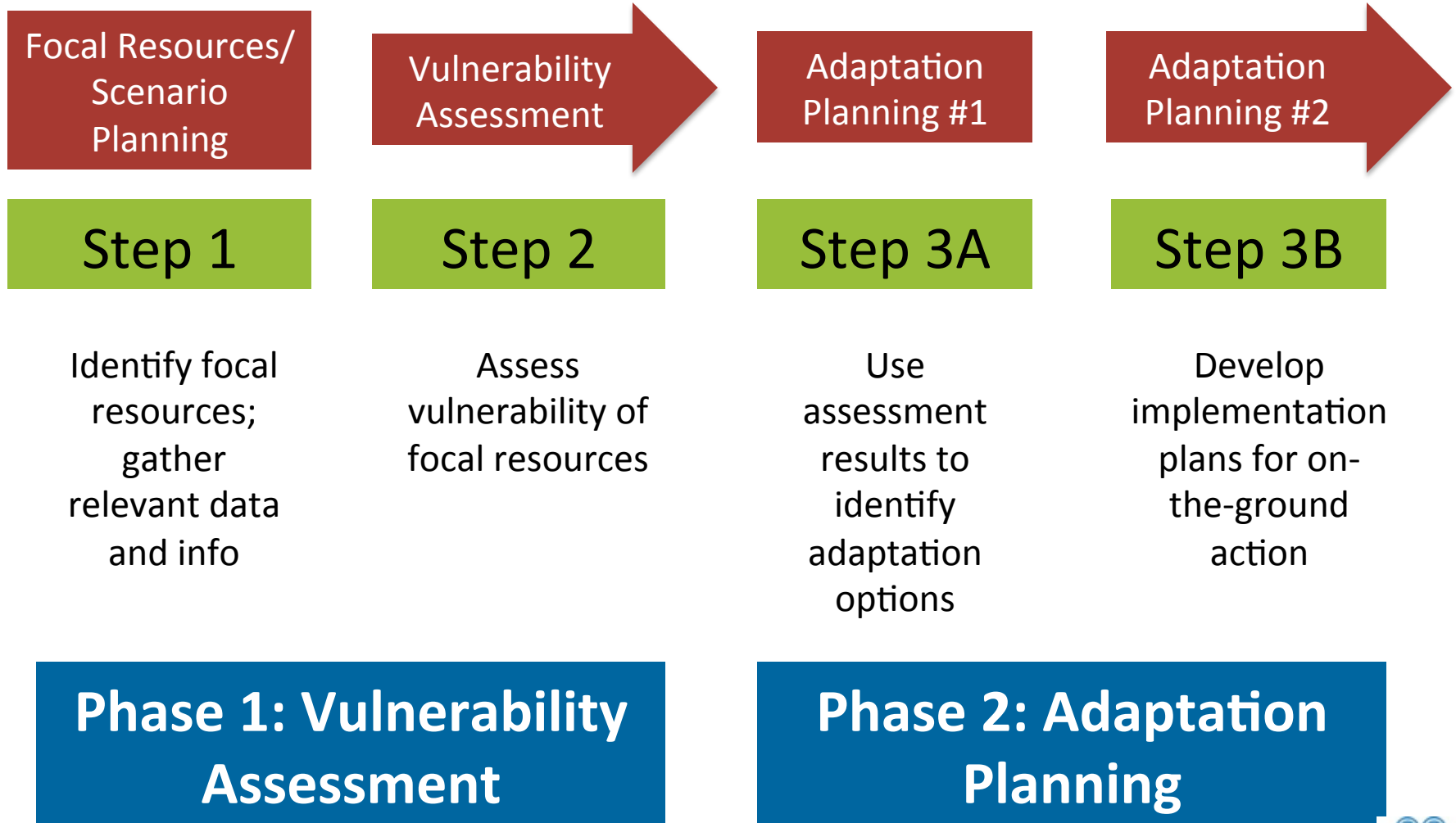
Project planning & NEPA

Facilitate partnerships & collaboration

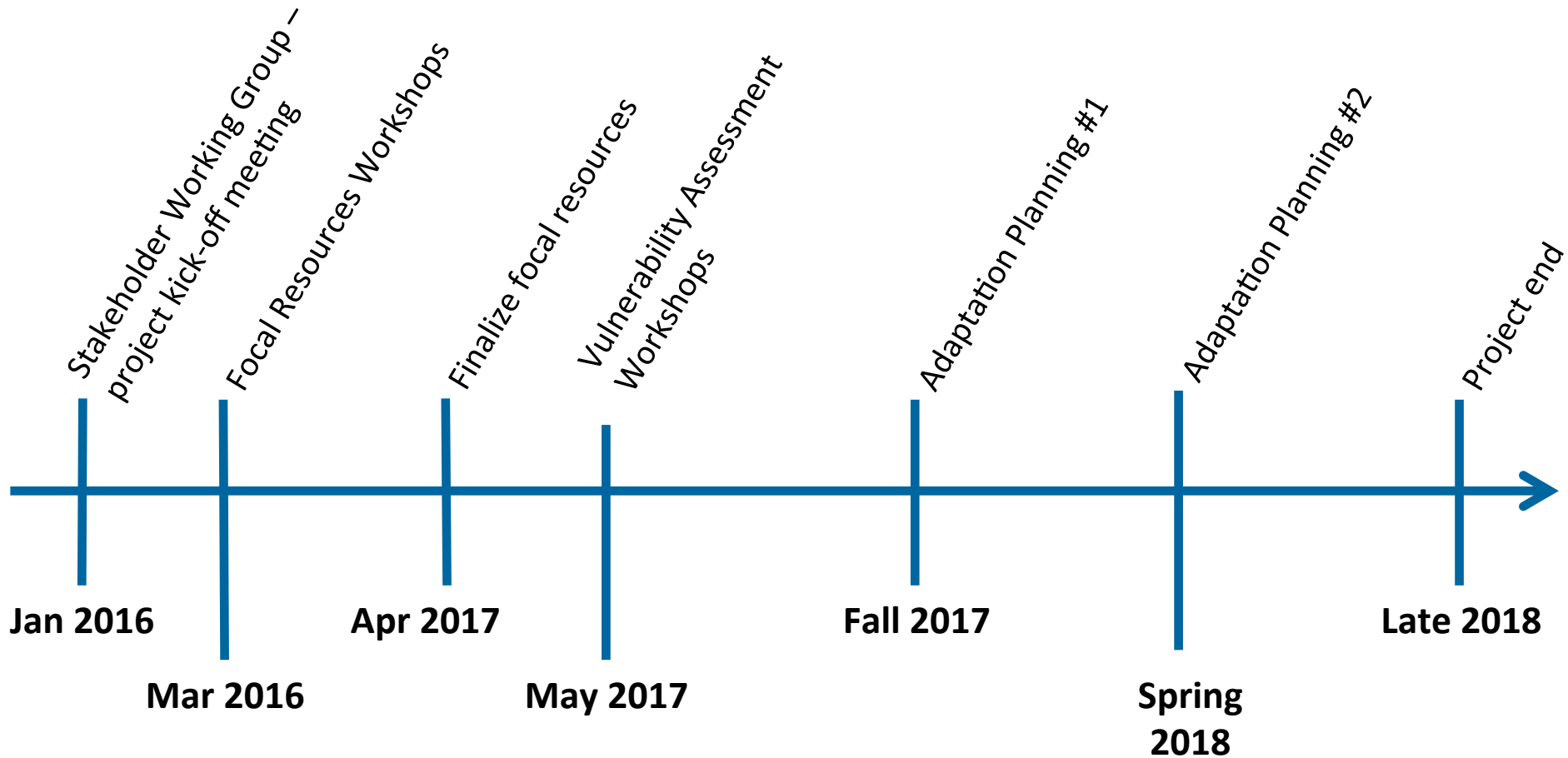
Other regional conservation efforts



Project Methodology



Project Timeline



* All workshops will be held in both Eureka and Redding



Step 1: Identify Priorities

GOAL: Collaboratively identify regionally important resources

- Management, cultural, or socio-economic concern
 - Habitats, Species/Species groups, Ecosystem services
- Form Stakeholder Working Group
 - Identify draft list of habitats
 - Create focal resource selection guidance

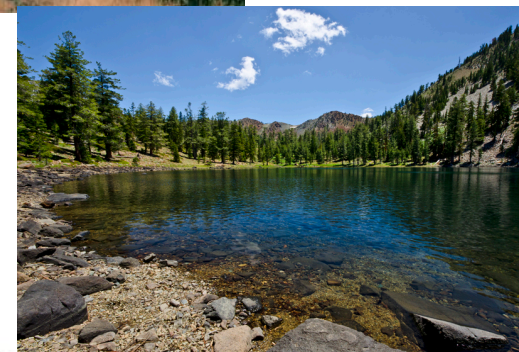


Step 1: Identify Priorities

GOAL: Collaboratively identify regionally important resources

- Management, cultural, or socio-economic concern
- Habitats, Species/Species groups, Ecosystem services

- Convened Focal Resources & Scenario Planning Workshops to:
 - Review/Revise draft list of habitats
 - Identify species/species groups, ecosystem services
 - Explore alternative climate futures
- Over 65 stakeholders participated from ~23 different agencies/organizations
- ~75 resources identified
- USFS/BLM reviewed and prioritized list



Step 1: Identify Priorities

GOAL: Collaboratively identify regionally important resources

- Management, cultural, or socio-economic concern
- Habitats, Species/Species groups, Ecosystem services

Since Focal Resources Workshops:

- USFS/BLM reviewed and prioritized list
- USFS and BLM sent out government-to-government consultation letter to regional tribes
 - Tribes reviewed draft list and added some new resources

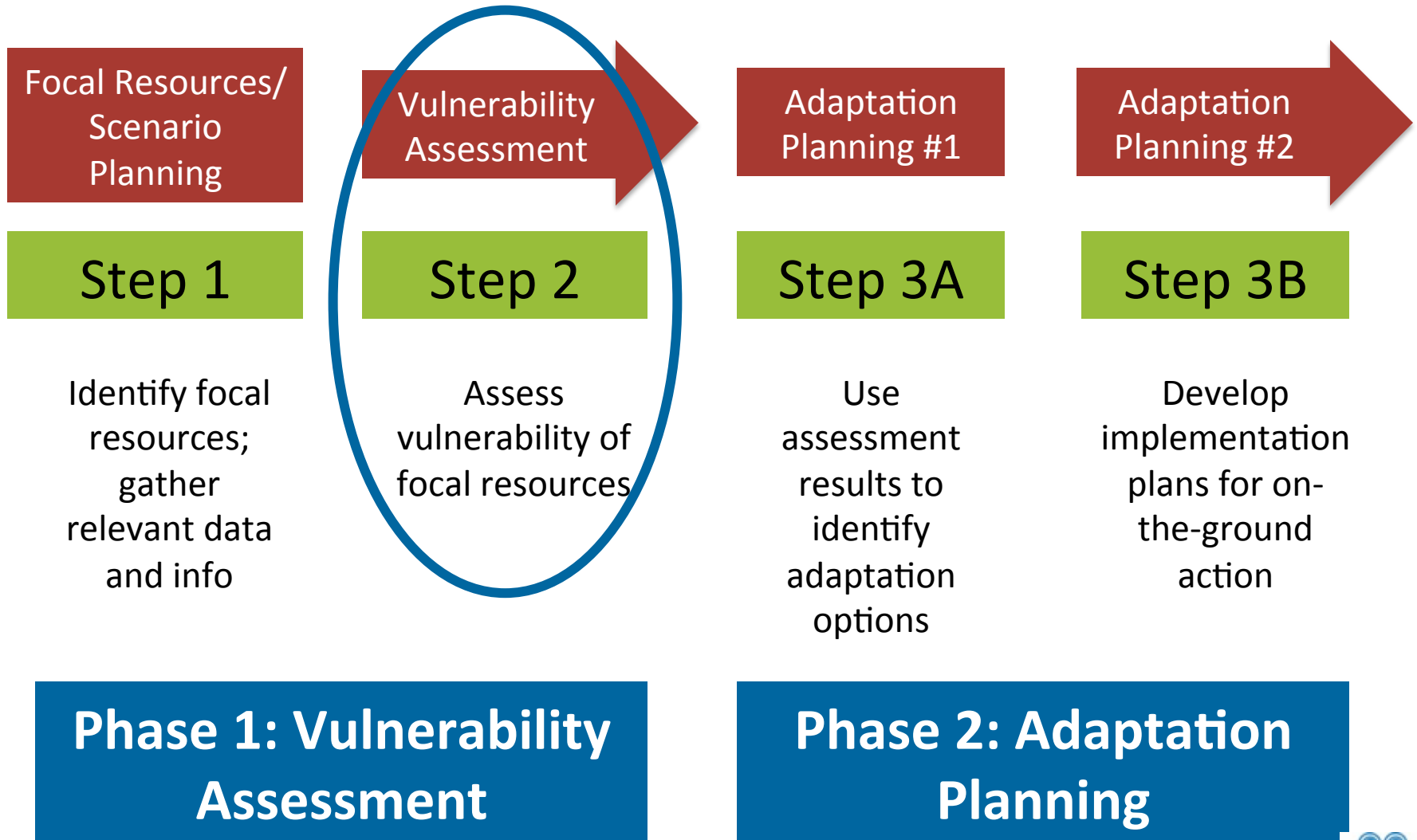


Step 1: Product

| | Habitats | Species/Species Groups |
|---------------------|--|---|
| Coastal | <ul style="list-style-type: none"> • Coastal Dune Forest (dune grassland, non-tidal wetlands, forest mosaic) • Coastal/Bluff Scrub (coastal bluff scrub, prairie) | <ul style="list-style-type: none"> • Anadromous Fish (salmonids, lamprey, sturgeon) |
| Woodland | <ul style="list-style-type: none"> • Oak Woodlands • Mixed Conifer Woodlands/Mixed Evergreen Forest | <ul style="list-style-type: none"> • Native Ungulates (Roosevelt elk, deer) • Tanoak • Black oak |
| Shrub/ Grassland | <ul style="list-style-type: none"> • Chaparral • Mixed Grasslands (non-alpine) • Alpine Grassland/Shrubland | <ul style="list-style-type: none"> • Native Pollinators • Migratory Birds • Brush Rabbit |
| Forest | <ul style="list-style-type: none"> • Coastal Redwood • Mixed Conifer/Ponderosa (dry and moist) • Coastal Conifer Hardwood (incl. pygmy forest) • Coastal Pine Forest • True Fir Forest • Subalpine | <ul style="list-style-type: none"> • Salamanders (Pacific Giant, endemic) • Late Successional-Dependent Species (marten, fisher, northern spotted owl) • Marbled Murrelet • Rare Trees (spruce, cedar, alpine, cypress, enriched conifers) • Sugar pine |
| Freshwater | <ul style="list-style-type: none"> • Rivers, Streams, Floodplain • Lakes, Ponds • Marshes, Vernal Pools • Seeps, Springs, Groundwater • Wet Meadows, Freshwater Wetlands, Fens • Riparian | <ul style="list-style-type: none"> • Frogs (Northern Red-Legged, Foothill Yellow-Legged, Tailed) • Port Orford Cedar • Western Pond Turtle • Riparian Nesting Birds (warblers, grosbeak) • Native mussels |
| Endemic | <ul style="list-style-type: none"> • Rock Outcrops, Cliffs, Talus, Caves | <ul style="list-style-type: none"> • Bats |



Project Methodology



Vulnerability Workshop Objectives

Day 1

- Provide participants with an overview of projected future trends for northwestern California
- Assess vulnerabilities of habitats to climate change

Day 2

- Assess vulnerabilities of species groups and species
- Present example case studies of moving from vulnerability to developing adaptation strategies
- Share example products, how they can be used, and next steps

Questions?

