

Nez Perce-Clearwater National Forest Vulnerability Assessment Workshop

Jessi Kershner, Lead Scientist
jessi@ecoadapt.org



Workshop Goal

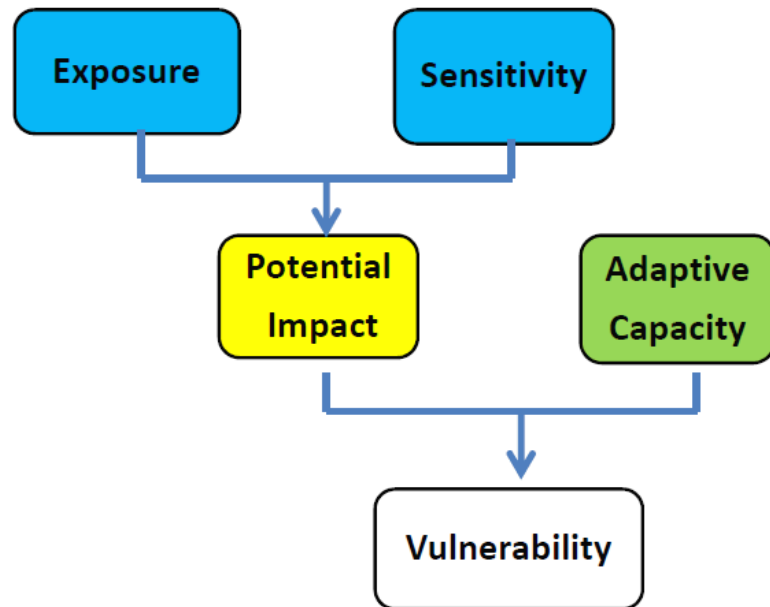
To Assess the Vulnerabilities of Resources of Management Focus in the Nez Perce-Clearwater National Forest to Climate and Non-Climate Stressors

Workshop information and products can be used in:

- Forest Plan assessment
- Climate Change Performance Scorecard



Defining Vulnerability

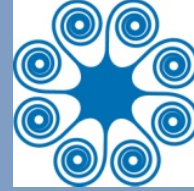


Vulnerability: susceptibility of a resource to the adverse effects of climate change. A function of its sensitivity to climate and non-climate stressors, its exposure to those stressors, and its ability to cope with impacts with minimal disruption (Glick et al. 2011).

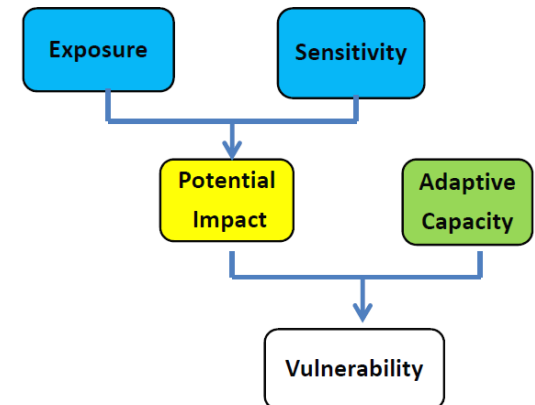
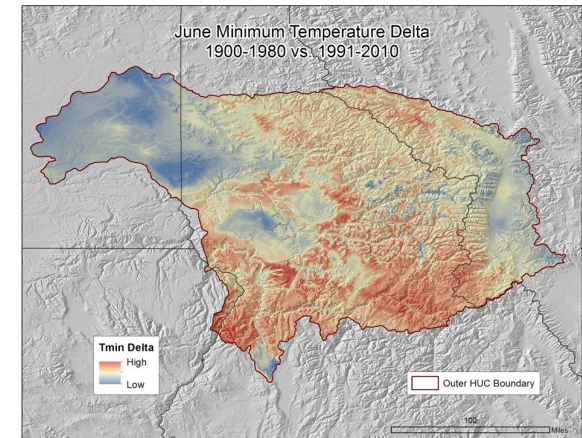
$$V = S * E * (1/AC)$$



Objectives



1. Provide participants with baseline knowledge and understanding of climate trends for the Nez Perce-Clearwater National Forest and surrounding region.
2. Assess vulnerabilities of ecosystems and species to climate change including sensitivity, exposure, and adaptive capacity.
3. Provide baseline socio-economic and ecosystem services knowledge and assess related vulnerabilities.
4. Provide vulnerability assessment training, resources, support, and tools to participants to apply throughout the Forest Plan revision process and beyond.



Agenda

DAY ONE

- Climate trends (current, historic, projected future) for the Nez Perce-Clearwater
 - Temperature, Precipitation
 - Hydrology, Stream temperature
 - Forested vegetation
 - Non-forested and riparian vegetation
- Introduction to vulnerability assessments and components
- Ecosystem vulnerability assessment – breakout groups
- Introduction to human dimensions

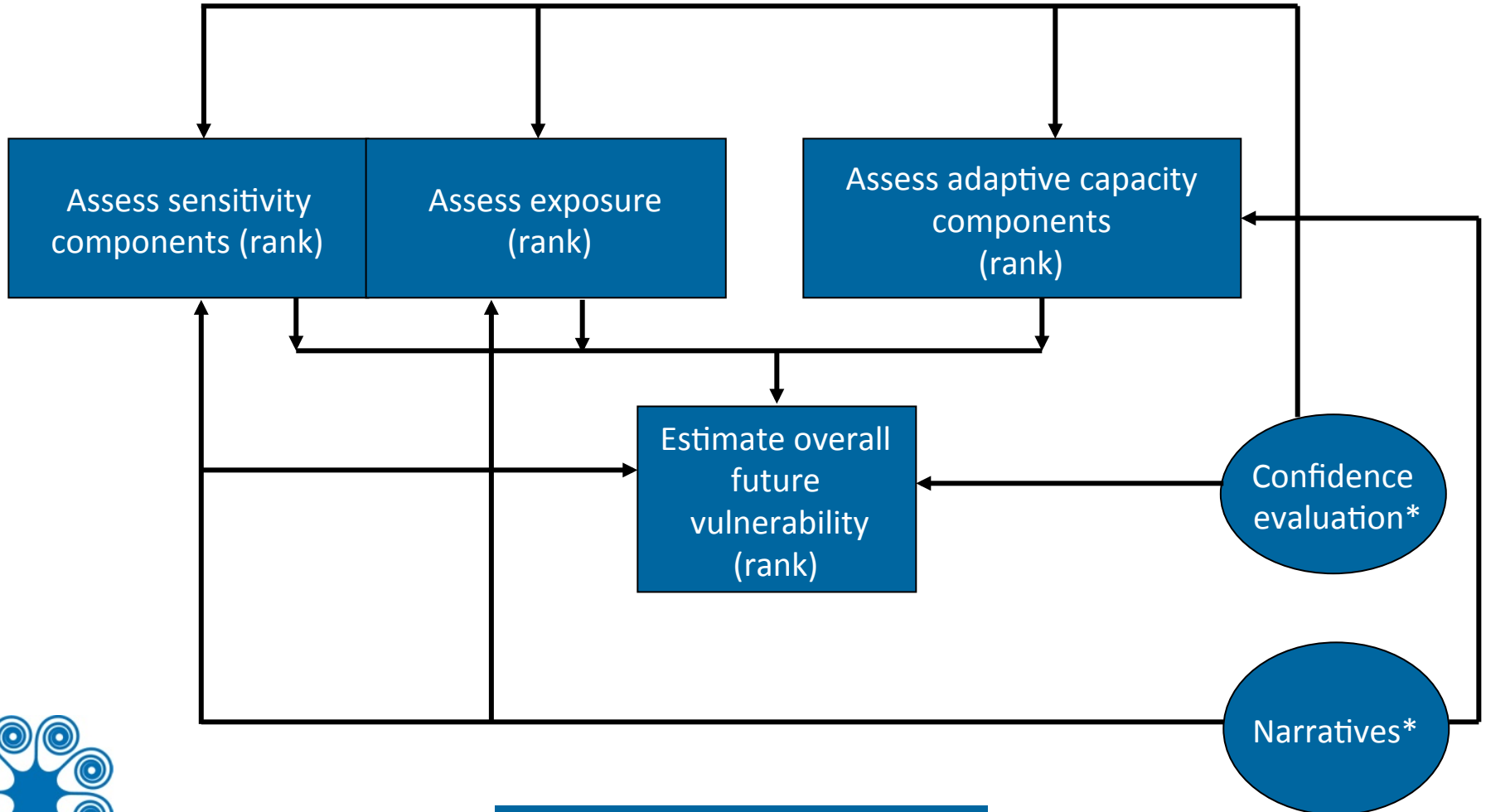
DAY TWO

- Species vulnerability assessment breakout groups
- Human and economic vulnerabilities – facilitated discussions
- Ecosystem services vulnerabilities – breakout groups



Assessing Vulnerability – Breakout Groups

Modified NEAFWA expert elicitation process



* Documenting uncertainty



Products

1. Climate impacts table summarizing EXPOSURE
 - Table in your packet
 - Info from this workshop will be added
2. Summaries of resource vulnerabilities to climate and non-climate stressors
 - Table summarizing major factors influencing sensitivity and adaptive capacities of resources
 - Short (~2 page) documents summarizing findings, including peer-review references
3. Esri map package (data and metadata) for climate trends

→ Findings complementary to Climate Change Sensitivity Database: <http://climatechangesensitivity.org/>



Questions?

ALL WORKSHOP MATERIALS WILL BE POSTED:

<http://ecoadapt.org/workshops/va-workshop-npc>

*Up Next: Climate trends in the Nez Perce-
Clearwater National Forest – historic and
projected changes*

