

Projected temperature and precipitation increases for the Pacific Northwest Region as modeled by the UW Climate Impacts Group. SRES B1 reflects significant greenhouse gas mitigation by the mid 21st century (low emissions scenario). SRES A1B reflects significant greenhouse gas mitigation by the end of the 21st Century (medium emissions scenario). Shading encompasses the range between the 5th percentile (best case) and 95th percentile (worst case). Figure from **the 2012 Bainbridge island Hazard Identification and Vulnerability Assessment, 2012.**

City of Bainbridge Island Watersheds & Critical Areas Map



Legend

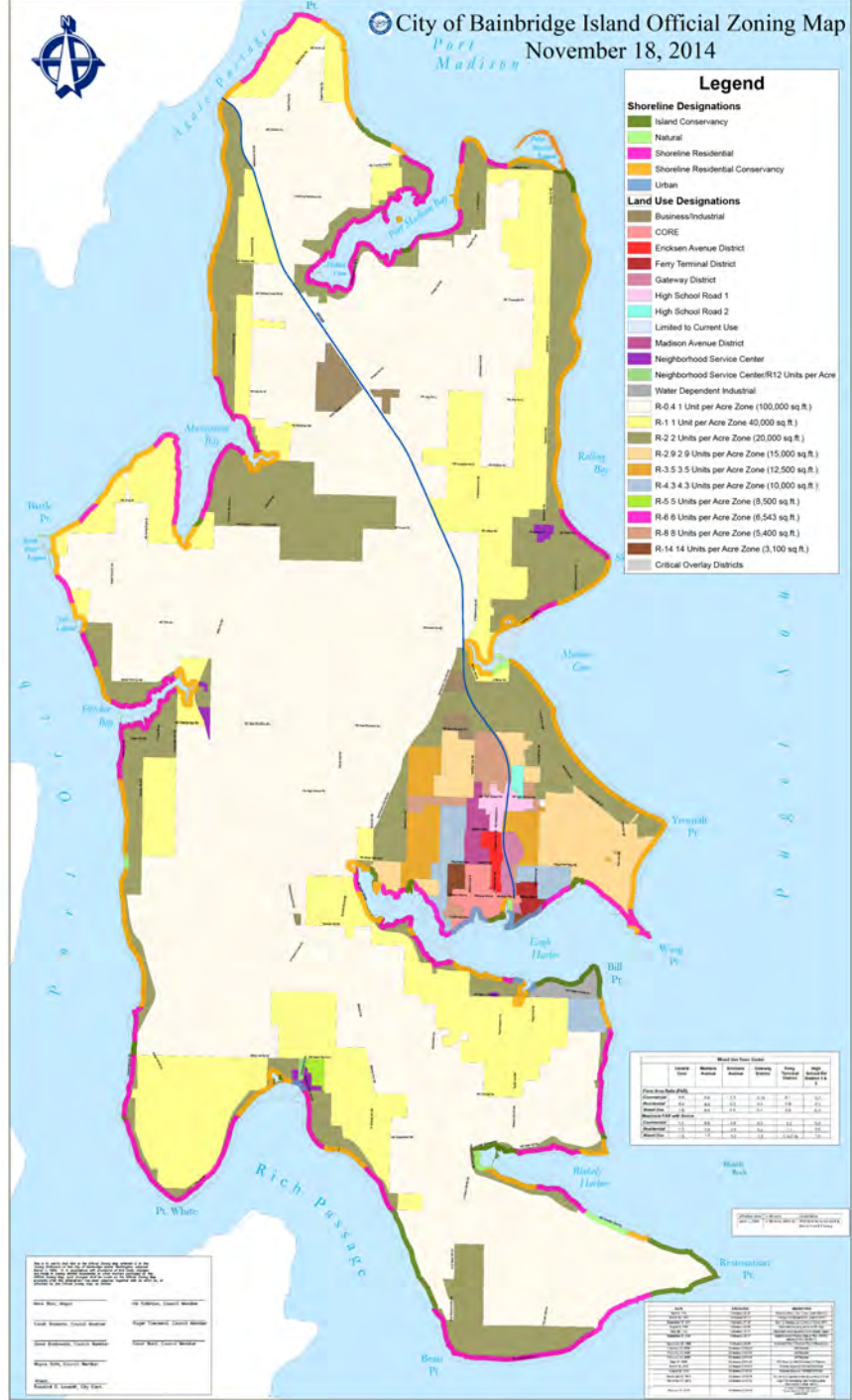
- Slopes 40% and Greater
- Areas of Liquefaction
- Streams
- USGS Mapped Landslides
- Watersheds
- Wetlands

City of Bainbridge Island Department of Planning
This map was prepared for the City of Bainbridge Island. It is not intended to be used for any other purpose. The City of Bainbridge Island is not responsible for any errors or omissions on this map. The City of Bainbridge Island is not responsible for any damages or losses resulting from the use of this map. The City of Bainbridge Island is not responsible for any claims or liabilities resulting from the use of this map. The City of Bainbridge Island is not responsible for any claims or liabilities resulting from the use of this map.

City of Bainbridge Island Official Zoning Map
Part Madison
 November 18, 2014



- ### Legend
- Shoreline Designations**
- Island Conservancy
 - Natural
 - Shoreline Residential
 - Shoreline Residential Conservancy
 - Urban
- Land Use Designations**
- Business/Industrial
 - CORE
 - Erickson Avenue District
 - Ferry Terminal District
 - Gateway District
 - High School Road 1
 - High School Road 2
 - Limited to Current Use
 - Madison Avenue District
 - Neighborhood Service Center
 - Neighborhood Service Center/R12 Units per Acre
 - Water Dependent Industrial
 - R-0.4 1 Unit per Acre Zone (100,000 sq ft.)
 - R-1 1 Unit per Acre Zone (40,000 sq ft.)
 - R-2 2 Units per Acre Zone (20,000 sq ft.)
 - R-2.9 2.9 Units per Acre Zone (15,000 sq ft.)
 - R-3.5 3.5 Units per Acre Zone (12,500 sq ft.)
 - R-4.3 4.3 Units per Acre Zone (10,000 sq ft.)
 - R-5 5 Units per Acre Zone (8,500 sq ft.)
 - R-6 6 Units per Acre Zone (6,543 sq ft.)
 - R-8 8 Units per Acre Zone (5,400 sq ft.)
 - R-14 14 Units per Acre Zone (3,100 sq ft.)
 - Critical Overlay Districts



Map Area Statistics

Zone	Area (sq ft)	Area (Acres)	Population	Units	Value	Value per Unit
Port Area	1,000,000	23	1,000	100	10,000,000	100,000
Residential	1,000,000	23	1,000	100	10,000,000	100,000
Commercial	1,000,000	23	1,000	100	10,000,000	100,000
Industrial	1,000,000	23	1,000	100	10,000,000	100,000
Public	1,000,000	23	1,000	100	10,000,000	100,000
Other	1,000,000	23	1,000	100	10,000,000	100,000
Total	5,000,000	115	5,000	500	50,000,000	100,000

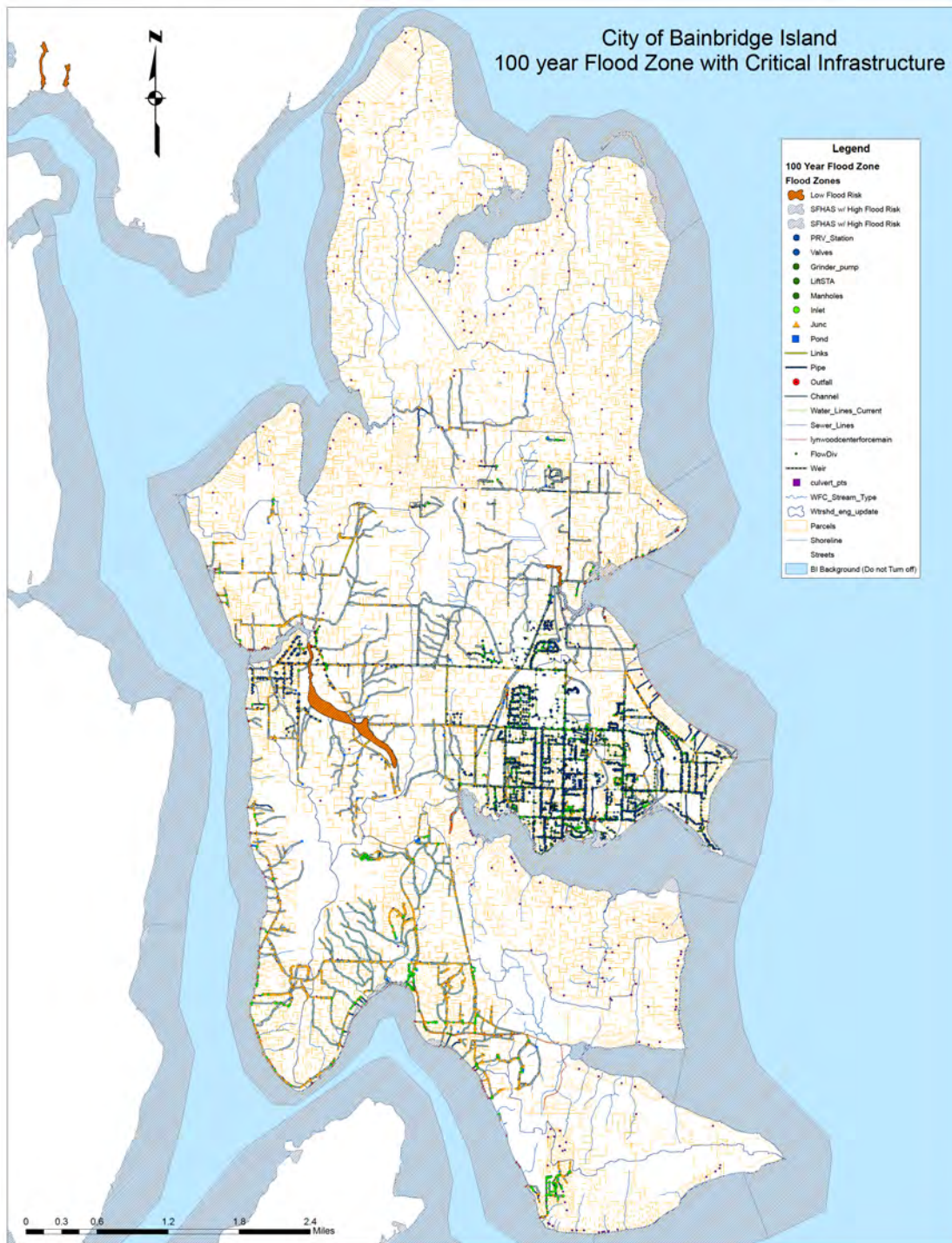
Map Symbols

- Blue line: Major Road
- Red line: Local Road
- Green line: Utility Line
- Black line: Property Line
- Grey line: Easement
- Blue area: Water
- Green area: Forest
- Yellow area: Wetland
- Pink area: Shoreline Residential
- Orange area: Shoreline Residential Conservancy
- Blue area: Urban
- Brown area: Business/Industrial
- Red area: Erickson Avenue District
- Dark Red area: Ferry Terminal District
- Purple area: Gateway District
- Light Blue area: High School Road 1
- Light Green area: High School Road 2
- White area: Limited to Current Use
- Dark Purple area: Madison Avenue District
- Light Purple area: Neighborhood Service Center
- Light Green area: Neighborhood Service Center/R12 Units per Acre
- Dark Green area: Water Dependent Industrial
- Yellow area: R-0.4 1 Unit per Acre Zone (100,000 sq ft.)
- Light Yellow area: R-1 1 Unit per Acre Zone (40,000 sq ft.)
- Orange area: R-2 2 Units per Acre Zone (20,000 sq ft.)
- Dark Orange area: R-2.9 2.9 Units per Acre Zone (15,000 sq ft.)
- Light Orange area: R-3.5 3.5 Units per Acre Zone (12,500 sq ft.)
- Yellow-Green area: R-4.3 4.3 Units per Acre Zone (10,000 sq ft.)
- Green area: R-5 5 Units per Acre Zone (8,500 sq ft.)
- Light Green area: R-6 6 Units per Acre Zone (6,543 sq ft.)
- Dark Green area: R-8 8 Units per Acre Zone (5,400 sq ft.)
- Dark Green area: R-14 14 Units per Acre Zone (3,100 sq ft.)
- Grey area: Critical Overlay Districts

Map Symbols

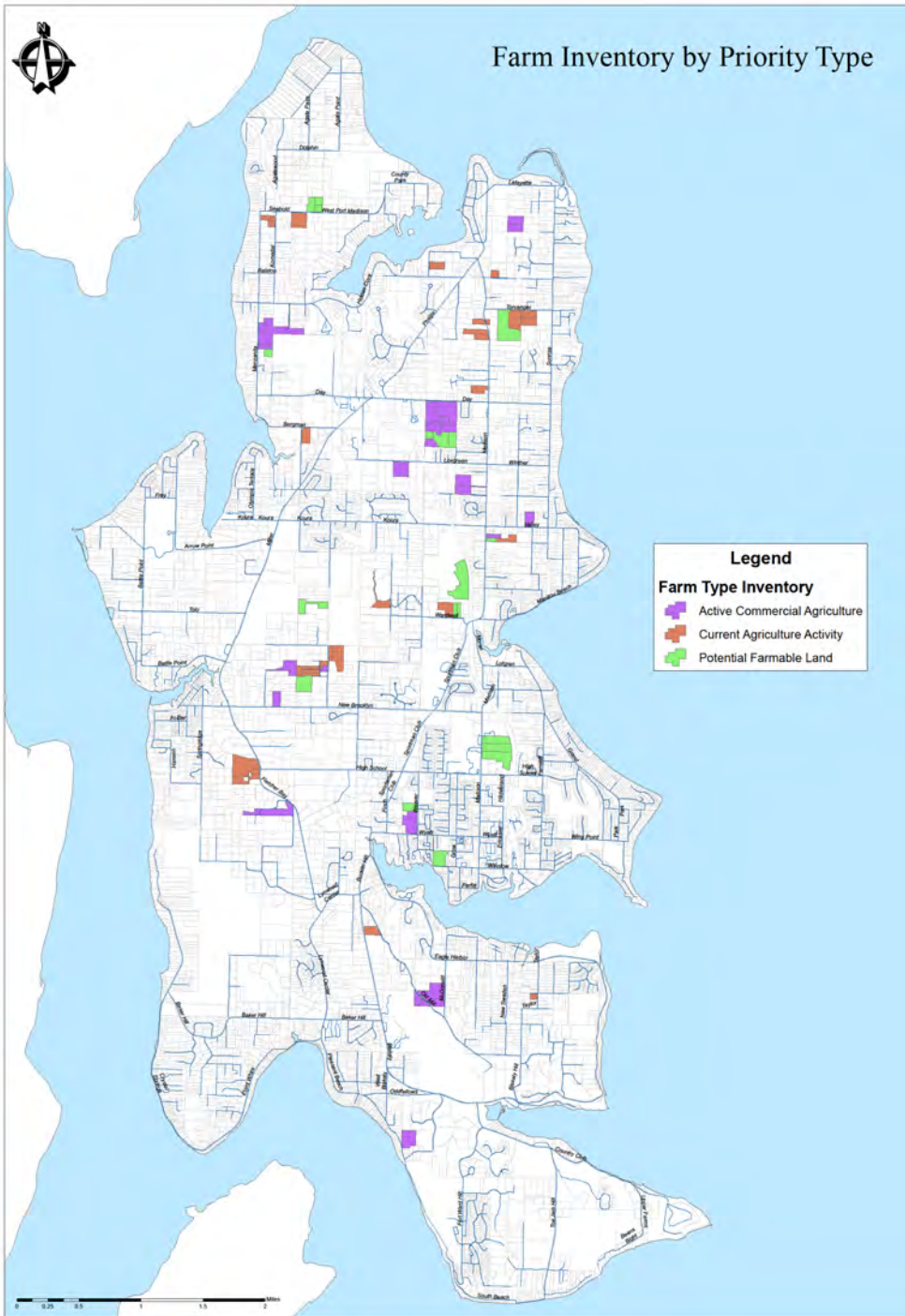
Symbol	Description
Blue line	Major Road
Red line	Local Road
Green line	Utility Line
Black line	Property Line
Grey line	Easement
Blue area	Water
Green area	Forest
Yellow area	Wetland
Pink area	Shoreline Residential
Orange area	Shoreline Residential Conservancy
Blue area	Urban
Brown area	Business/Industrial
Red area	Erickson Avenue District
Dark Red area	Ferry Terminal District
Purple area	Gateway District
Light Blue area	High School Road 1
Light Green area	High School Road 2
White area	Limited to Current Use
Dark Purple area	Madison Avenue District
Light Purple area	Neighborhood Service Center
Light Green area	Neighborhood Service Center/R12 Units per Acre
Dark Green area	Water Dependent Industrial
Yellow area	R-0.4 1 Unit per Acre Zone (100,000 sq ft.)
Light Yellow area	R-1 1 Unit per Acre Zone (40,000 sq ft.)
Orange area	R-2 2 Units per Acre Zone (20,000 sq ft.)
Dark Orange area	R-2.9 2.9 Units per Acre Zone (15,000 sq ft.)
Light Orange area	R-3.5 3.5 Units per Acre Zone (12,500 sq ft.)
Yellow-Green area	R-4.3 4.3 Units per Acre Zone (10,000 sq ft.)
Green area	R-5 5 Units per Acre Zone (8,500 sq ft.)
Light Green area	R-6 6 Units per Acre Zone (6,543 sq ft.)
Dark Green area	R-8 8 Units per Acre Zone (5,400 sq ft.)
Dark Green area	R-14 14 Units per Acre Zone (3,100 sq ft.)
Grey area	Critical Overlay Districts

City of Bainbridge Island 100 year Flood Zone with Critical Infrastructure





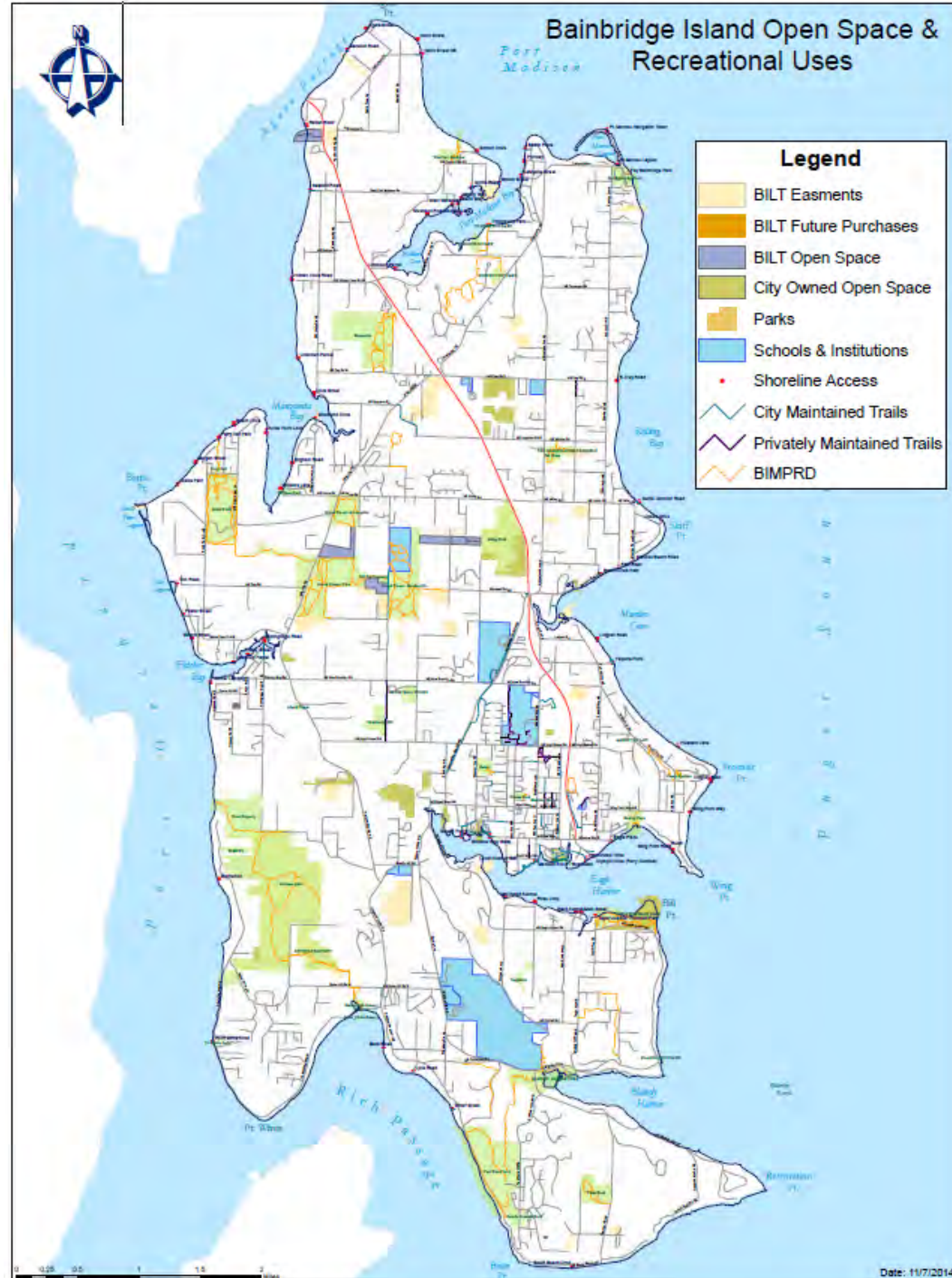
Farm Inventory by Priority Type



Bainbridge Island Open Space & Recreational Uses



- Legend**
- BILT Easements
 - BILT Future Purchases
 - BILT Open Space
 - City Owned Open Space
 - Parks
 - Schools & Institutions
 - Shoreline Access
 - City Maintained Trails
 - Privately Maintained Trails
 - BIMPRD

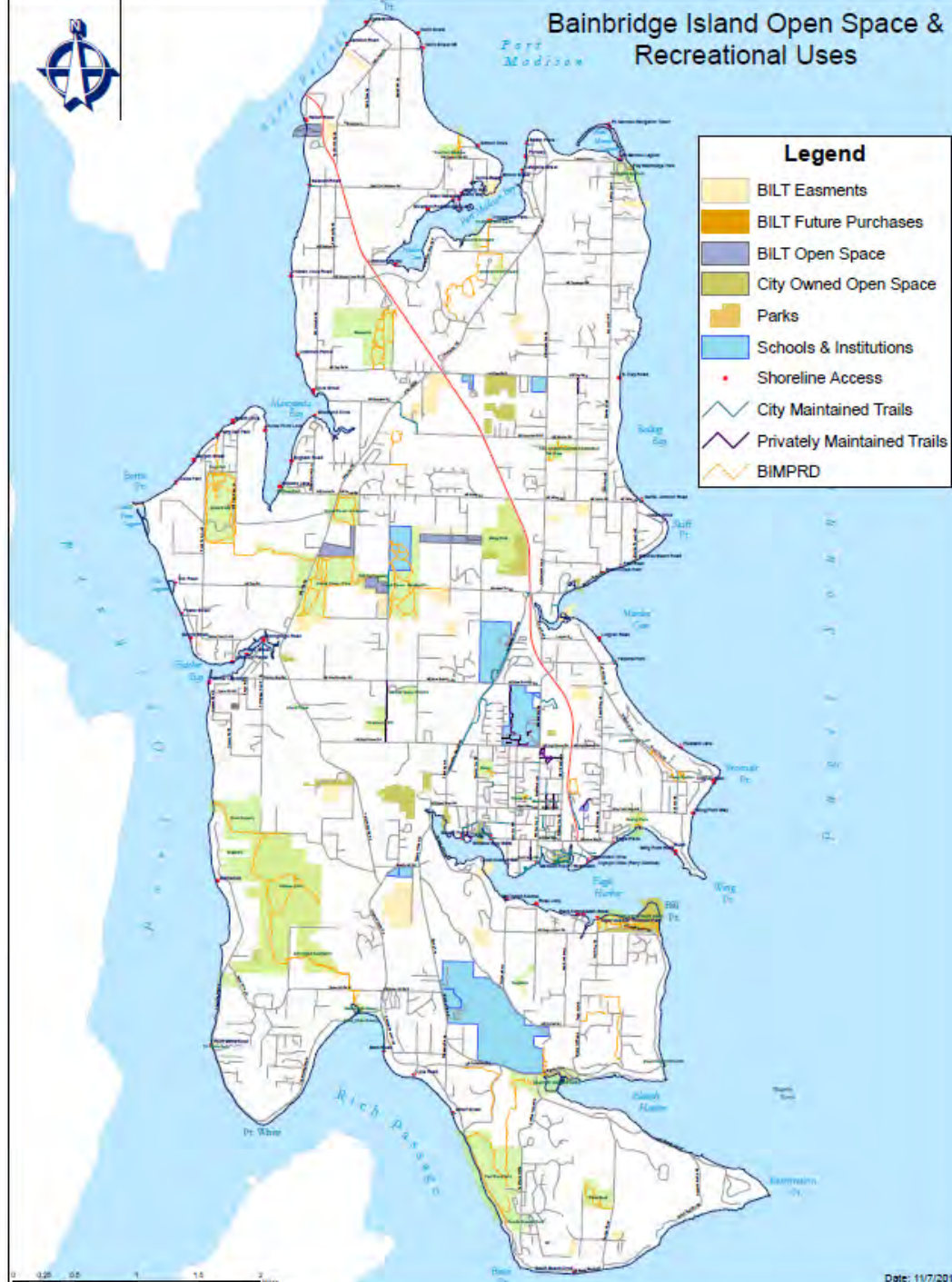


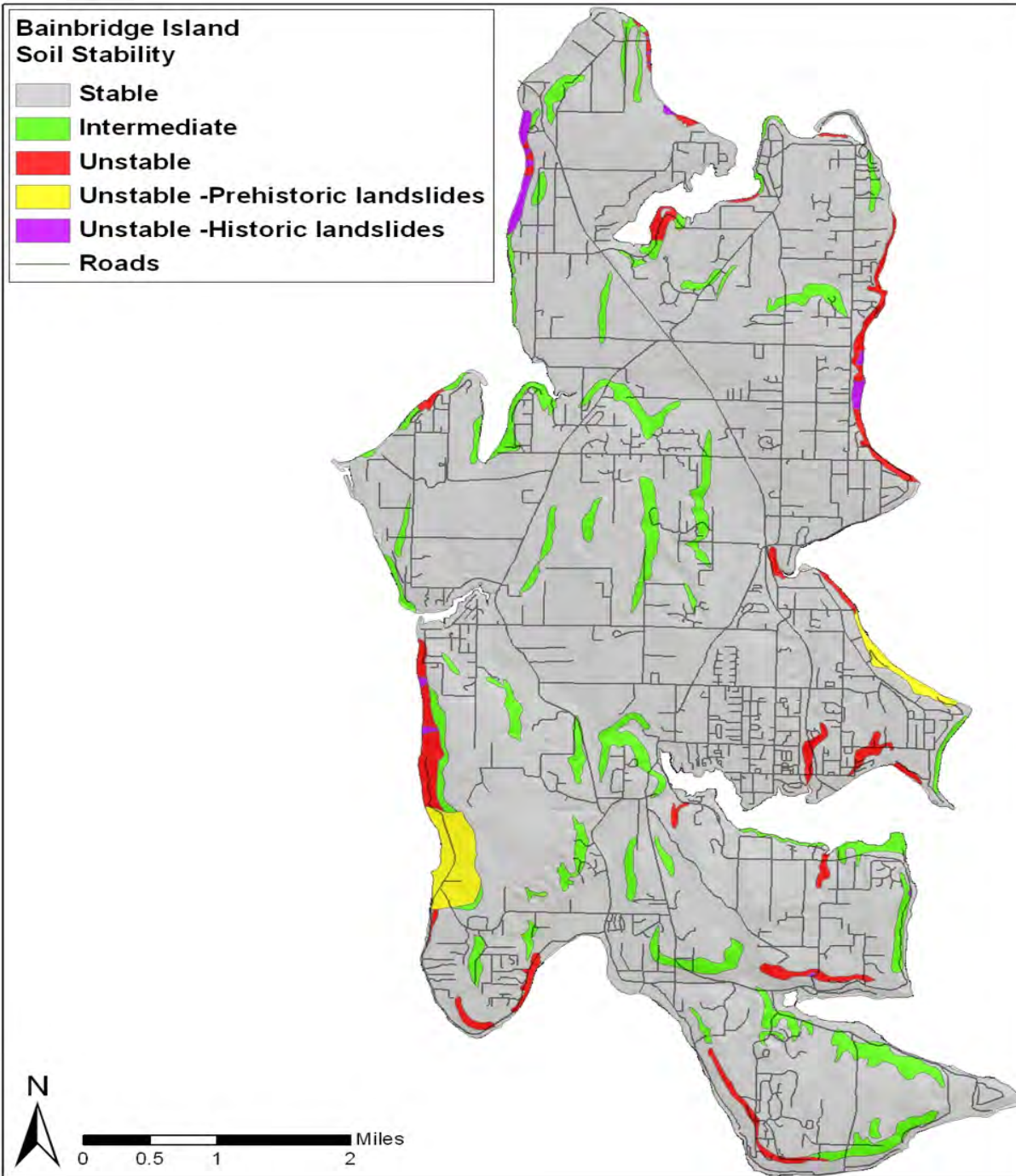
Bainbridge Island Open Space & Recreational Uses



Legend

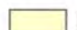


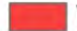
- BILT Easements
- BILT Future Purchases
- BILT Open Space
- City Owned Open Space
- Parks
- Schools & Institutions
- Shoreline Access
- City Maintained Trails
- Privately Maintained Trails
- BIMPRD

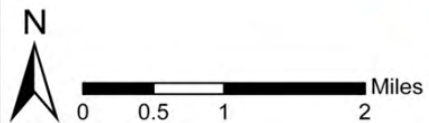
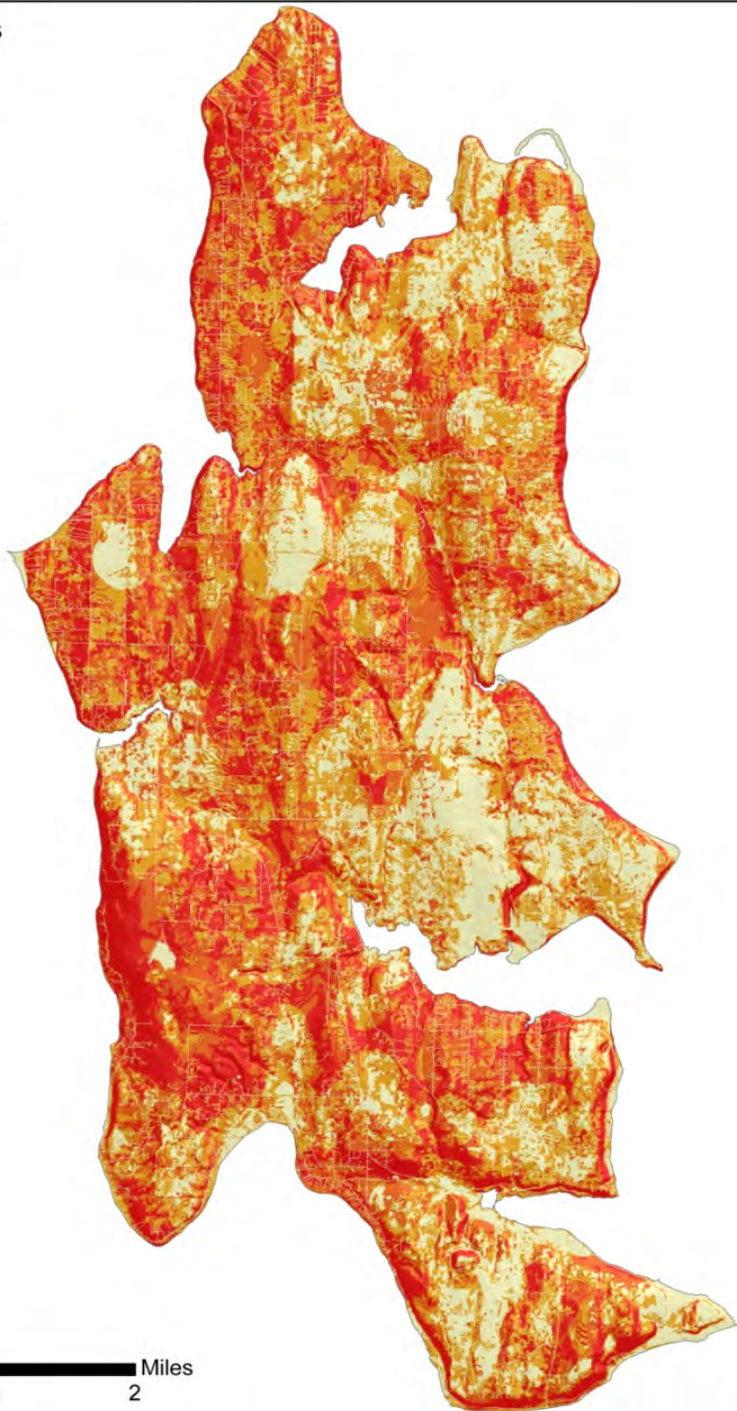




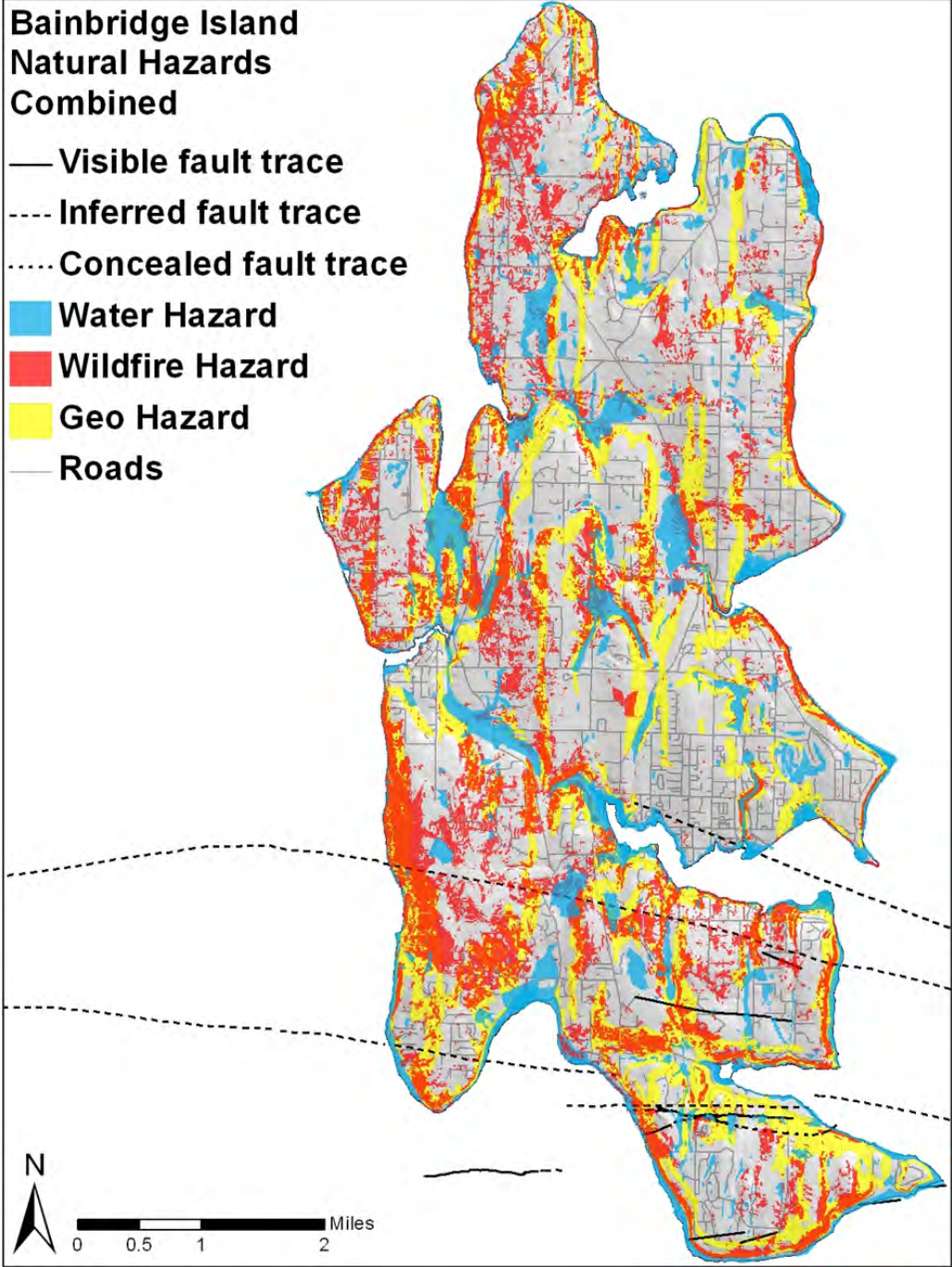
Source: 2012 Bainbridge Island
Hazard Identification and Vulnerability
Assessment, BIFD

**Wildfire Hazards
Combined**

-  Low
-  Moderate
-  High
-  Very High



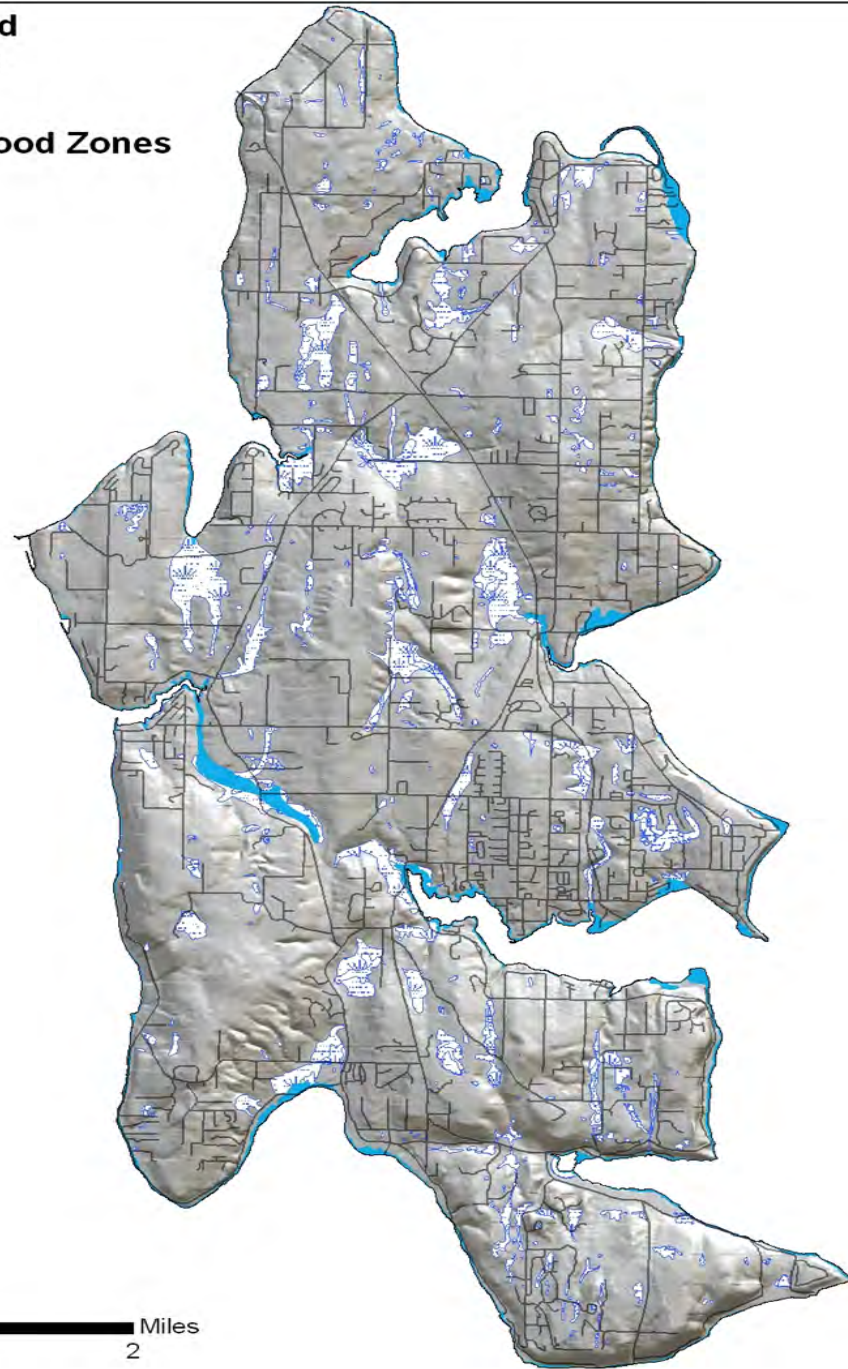
Source: 2012 Bainbridge Island Hazard Identification and Vulnerability Assessment, BIFD



Source: 2012 Bainbridge Island
Hazard Identification and Vulnerability
Assessment, BIFD

**Bainbridge Island
Flood Vulnerable
Areas**

- 100 Year Flood Zones
- ▨ Wetlands
- Roads



Source: 2012 Bainbridge Island
Hazard Identification and Vulnerability
Assessment, BIFD